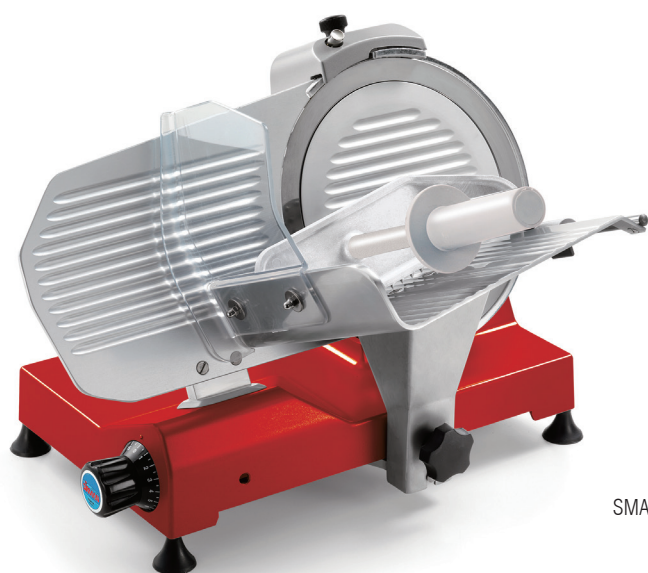


# 倾斜式切片机 SMART



SMART 250



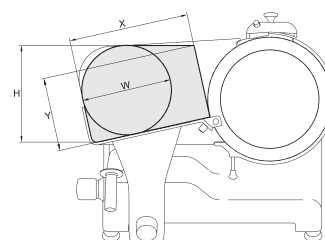
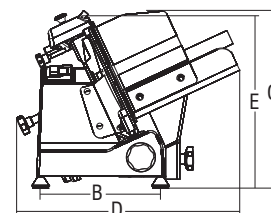
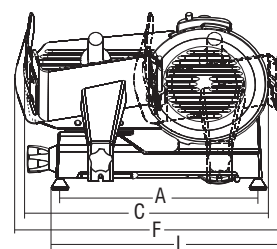
**On the go** 时尚轻巧的设计，方便搬运；  
**镀铬铝合金元器件** 铸铝合金机身和镀铬铝合金件；  
**风冷马达** 风冷马达，避免马达过热，操作更稳定。

**On the go** Stylish and lightweight design, easy to carry for catering needs;  
**Anodized Aluminum components** Superior die-cast aluminum construction with anodized aluminum components;  
**Fan cooled motors** Easy to carry and yet equipped with a fan cooled motors to avoid overheating for reliable operations;

- 喷涂铝合金机身；
- 镀铬铝合金部件；
- 带齿形的压杆由铝合金制成，能够很好地固定待加工产品，并符合人体工程学；
- 马达和刀片之间间距较大，方便清洁；
- 风冷马达，适于连续操作；
- 料斗的滑动杆可手动润滑；
- 结实的厚度调节板；
- 自带双磨石的磨刀器；
- 结构紧凑，切削力强；
- 刀片倾斜 25°。

- Ergonomic teeth shaped food-presser made of die-cast aluminum
- Great distance between blade and motor for easy cleaning
- Ventilated motor for continuous work
- Carriage running on self-lubricating bushes and lapped pins
- Cast-in body sharpener
- 25° blade inclination

其他颜色需提前预订



产品型号	刀片直径	电机功率	切削厚度	料斗行程	料斗尺寸	A	B	C	D	E	F	G	L	X	Y	H	W	净重	包装尺寸	毛重
	mm/inch.	W/Hp	mm	mm	mm	mm	mm	mm	mm	mm	mm	mm	mm	mm	mm	mm	mm	kg	mm	kg
SMART 250	250 / 10"	132 / 0.18	13	247	225 x 240	405	245	500	460	365	555	480	460	215	150	185	175	15.5	600 x 500 x 420	18