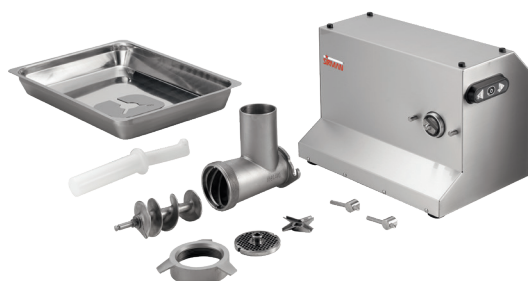




YOUKU 优酷

绞肉机 TC COLORADO



方便拆卸，易于清洁

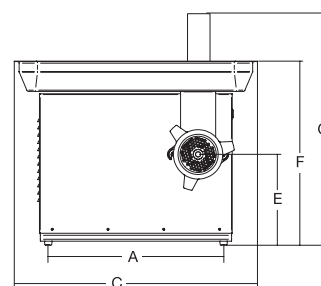
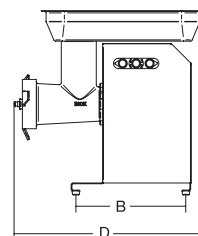


TC COLORADO

重要机型 机身和内部受力元器件均为不锈钢制造，畅销机型；**性价比高** TC 22 COLORADO的产量达到 300 kg/h，而 TC 32 COLORADO 的产量达到400 kg/h；**多场所可用** 强力风冷马达，IP55保护级齿轮箱，可用在酒店、医院、餐厅、企业食堂等。**Essential** AISI 304 stainless steel total body construction and IP54 controls;**Perfect Balance** The perfect balance between performance and costs, offering capacity 300 kg/h on the 22 model and 400 kg/h on the 32 model but maintaining a medium price range;**Just right** Packing powerful ventilated motor and IP55 sealed gear-box for heavy duty grade performance, maintaining easy breakdown-ability for cleaning;

- AISI 304 不锈钢机身；
- 风冷马达，适于连续操作；
- 蜗杆式马达减速器置于油浴系统中，从而提高了使用寿命；
- 马达减速器带有双密封系统，不但提高了使用寿命，而且使工作性能更加安全可靠；
- 无需工具即可将绞肉端部锁定，方便快捷；
- 不锈钢绞肉部件经精心设计，增加了产出；
- 可全部拆卸以便清洁。

- AISI 304 stainless steel construction to withstand heavy-duty application
- Powerful ventilated motor (up to 3Hp)
- Sealed gearbox with hardened gears in oil bath
- IP54 controls with reverse mode
- High output stainless mincing head
- Stainless steel plate and knife
- Easy breakdown for convenient cleaning



产品型号	功率	电源	产量	刀盘孔径	A	B	C	D	E	F	G	净重	包装尺寸	毛重
	W / Hp		kg/h.	mm	mm	mm	mm	mm	mm	mm	mm	kg	mm	kg
TC 22 COLORADO	1470 / 2	230V / 50Hz 单相	300	4.5	360	296	500	415	205	432	568	32	600 x 500 x 500	35
TC 32 COLORADO	2205 / 3	400V / 50Hz 三相	400	6	440	296	610	479	228	462	568	39	720 x 570 x 770	46