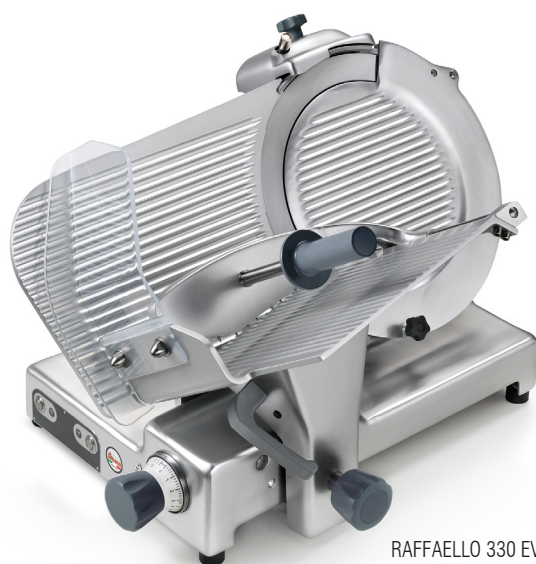
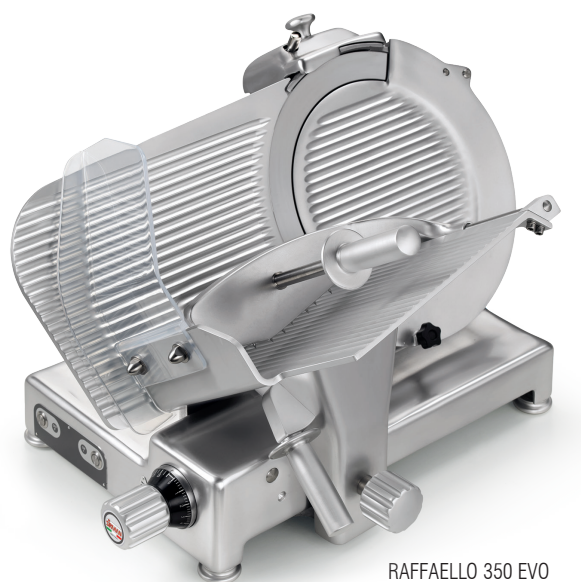


倾斜式切片机 RAFFAELLO EVO



RAFFAELLO 330 EVO



RAFFAELLO 350 EVO



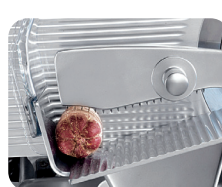
刀片保护罩易拆卸



无中心孔，避免杂质侵入



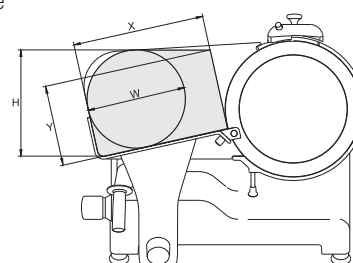
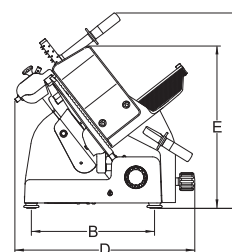
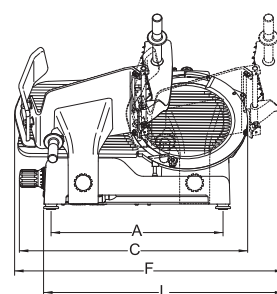
切薄片时更加精准



细小产品，也可完美切削

- 经NSF认证的高负载切片机；
- 圆角设计，无锋利棱角和可见螺钉；
- 镀铬滑动轴；
- 料斗的滑动杆可手动润滑；
- 料斗端部带树脂挡板；
- 不锈钢切片挡板；
- 新型刀片保护系统，无中心孔，避免杂质侵入，便于清洁；
- 无级厚度调节系统，可保证切薄片时（3mm 内）的高精度；
- 刀片保护罩易拆卸；
- 不锈钢螺钉和螺栓；
- 密封的皮带轮；
- 刀片和马达之间间距为 49.5mm；
- 底部带保护装置；
- 底部带保护槽的磨刀器；
- 刀片倾斜 35°。

- One piece sanitary polished and anodized aluminum construction
- Rounded design and no sharp edges and visible screws
- Self-lubricating slide rod bushings
- Vulcanized rubber stops on carriage
- Removable support cover for thickness gauge plate
- Stainless steel slice deflector, screws and fittings, aluminum knobs and telescopic feet with rubber base
- Dual stage cam system allow precise, thin and thick slicing
- Safety ring on table shaft to prevent liquids from entering the machine
- Easily removable blade cover
- 49,5 mm distance between blade and motor
- Bottom cover
- IP67 dustproof and waterproof rating stainless steel controls
- Built in sharpening tool
- 35° blade inclination



产品型号	刀片直径	电机功率	切削厚度	料斗行程	料斗尺寸	A	B	C	D	E	F	G	L	X	Y	H	W	净重	包装尺寸	毛重
	mm/inch.	W/Hp	mm	mm	mm	mm	mm	mm	mm	mm	mm	mm	mm	mm	mm	mm	mm	kg	mm	kg
RAFFAELLO 330 EVO	330 / 13"	275 / 0.37	23	355	330 x 307	513	340	690	560	475	840	595	660	307	205	260	240	37	760 x 640 x 700	46
RAFFAELLO 350 EVO	350 / 14"	370 / 0.50	23	355	330 x 307	513	340	715	570	480	840	595	665	307	220	275	250	38	760 x 640 x 700	47