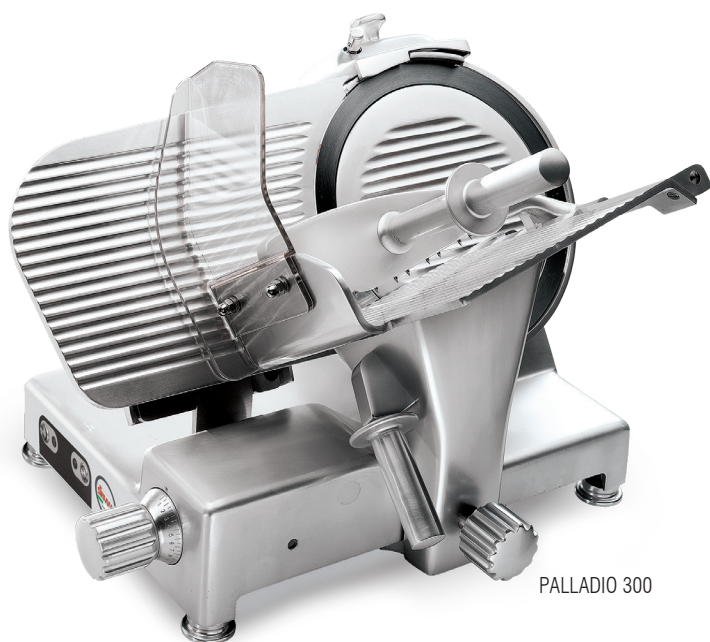
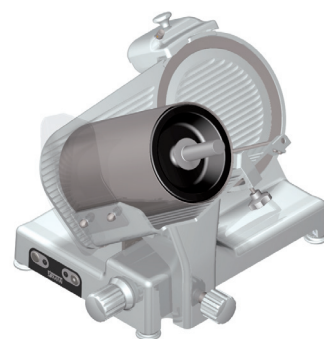


# 倾斜式切片机 PALLADIO



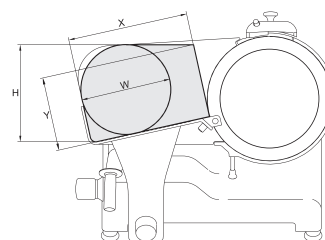
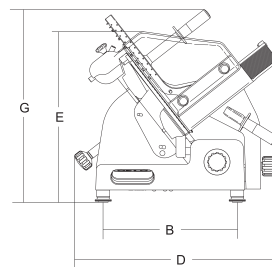
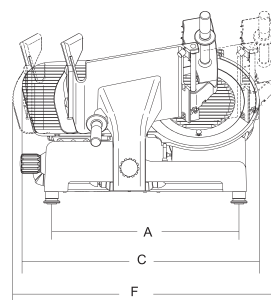
PALLADIO 300



可选件：  
专用于切蔬菜的圆筒

- 圆角设计，无锋利棱角和可见螺钉；
- 镀铬滑动轴；
- 抛光铸铁的滑动轴套；
- 料斗端部带树脂挡板；
- 厚度调节板支撑盖可拆卸；
- 销钉式接合不锈钢切片挡板；
- 不锈钢螺钉和零部件；
- 密封的皮带轮；
- 刀片和马达之间间距为 49.5 mm；
- 底部电子部件带保护罩；
- 自带双磨石的磨刀器；
- 铝合金把手和支脚；
- 可选件：专用于切蔬菜的圆筒。

- One piece sanitary polished and anodized aluminum construction
- Rounded design and no sharp edges and no visible screws
- Slide shaft made of ground, chromed steel for smoother operations
- Self-lubricating slide rod bushings
- Vulcanized rubber stops on carriage
- Removable support cover for thickness gauge plate
- Stainless steel slice deflector, screws and fittings, aluminum knobs and telescopic feet with rubber base
- Enclosed and sealed belt pulley
- 49,5 mm distance between blade and motor
- Bottom cover
- IP67 dustproof and waterproof rating stainless steel controls
- Built in sharpening tool
- 35° blade inclination



产品型号	刀片直径	电机功率	切削厚度	料斗行程	料斗尺寸	A	B	C	D	E	F	G	X	Y	H	W	净重	包装尺寸	毛重
	mm/inch.	W/Hp	mm	mm	mm	mm	mm	mm	mm	mm	mm	mm	mm	mm	mm	mm	kg	mm	kg
PALLADIO 300	300 / 12"	275 / 0.37	23	310	305 x 270	465	340	615	547	465	710	545	270	190	240	220	35	760 x 640 x 700	44