

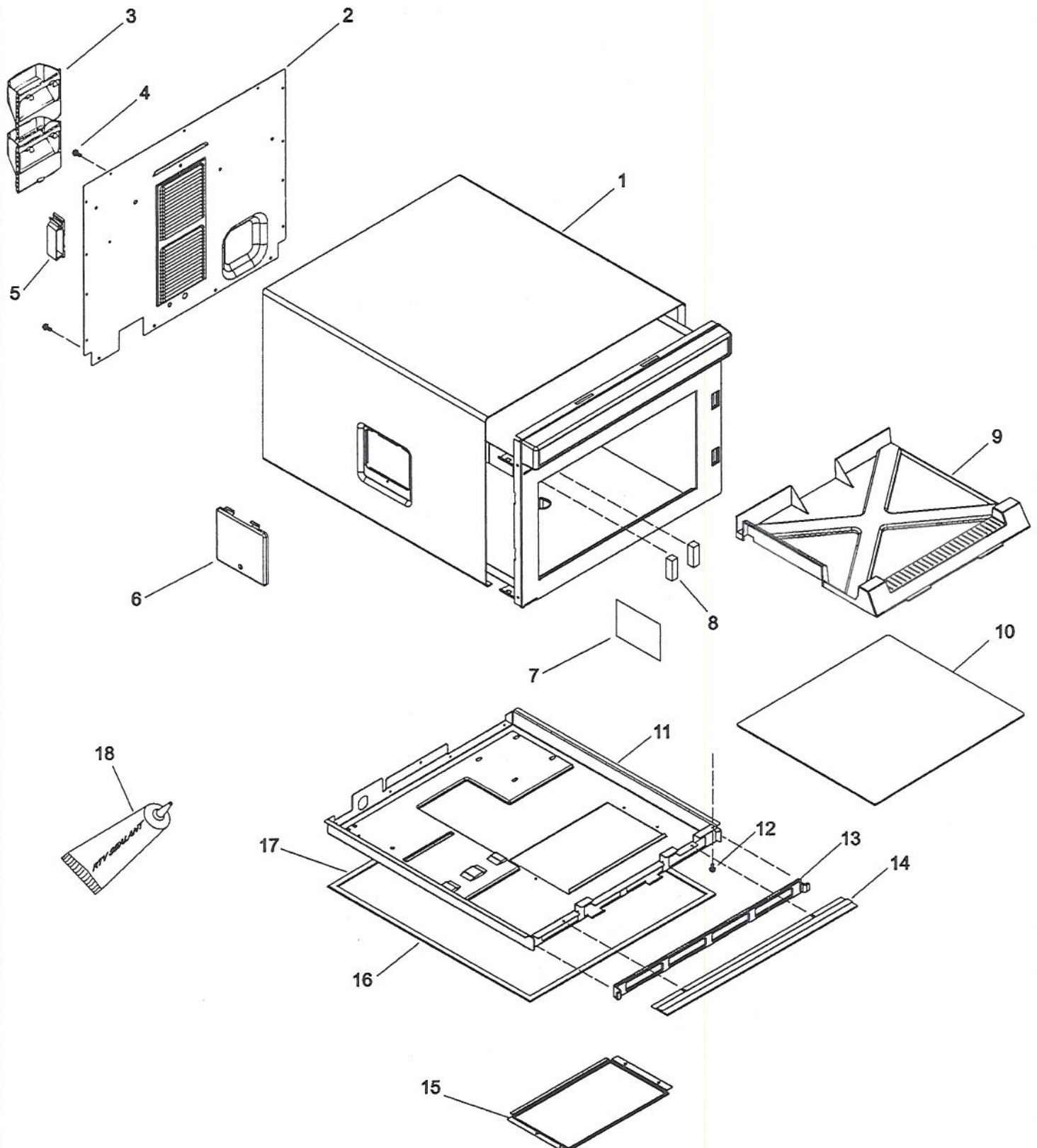
CHDC5182 P1331228M

CDEC18E2 P1331231M

No.	PART NUMBER	DESCRIPTION	#SEE BELOW	1	2	3	4	5
1	12408501	WRAPPER, OUTER CASE		1	1			
2	12296804	PAN, ACCESS-E CT		1	1			
3	12296601	DUCT, AIR		2	2			
4	12990525	SCREW-SM/HEX		17	17			
5	M0118705	CLIP, GUIDE		1	1			
6	10785608	COVER LIGHT (SS)		1	1			
-	M0274072	SPACER, RUBBER		1	1			
-	13042002	SCREW-TF/OVAL		1	1			
7	R9900114	ASSY, WINDOW KIT (LIGHT LENS)		1	1			
8	12496801	SUPPORT, SHELF		2	2			
9	12126601	SHIELD-GREASE		1	1			
10	R0150144	TRAY-CERAMIC FLOOR W/SEALER		1	1			
11	59002074	ASY, BASE PAN 50 HZ		1	1			
12	12990524	SCREW-SM/HEX		1	1			
13	59001659	SCREEN FILTER		1	1			
14	12131301	TRIM-OC		1	1			
-	67006408	SCREW, SM		2	2			
15	12486002	BASE COVER, E CT		1	1			
-	12990522	SCREW-SM/HEX		3	3			
16	59001643	GASKET,BASEPAN - CUT		2	2			
17	59001642	GASKET,BASEPAN - CUT		2	2			
18	M0275598	SEALER		1	1			

Section: TRAY, GREASE SHIELD, CABINET,

Model: CDEC18E2 P1331231M, CHDC5182 P1331228M,



CHDC5182 P1331228M

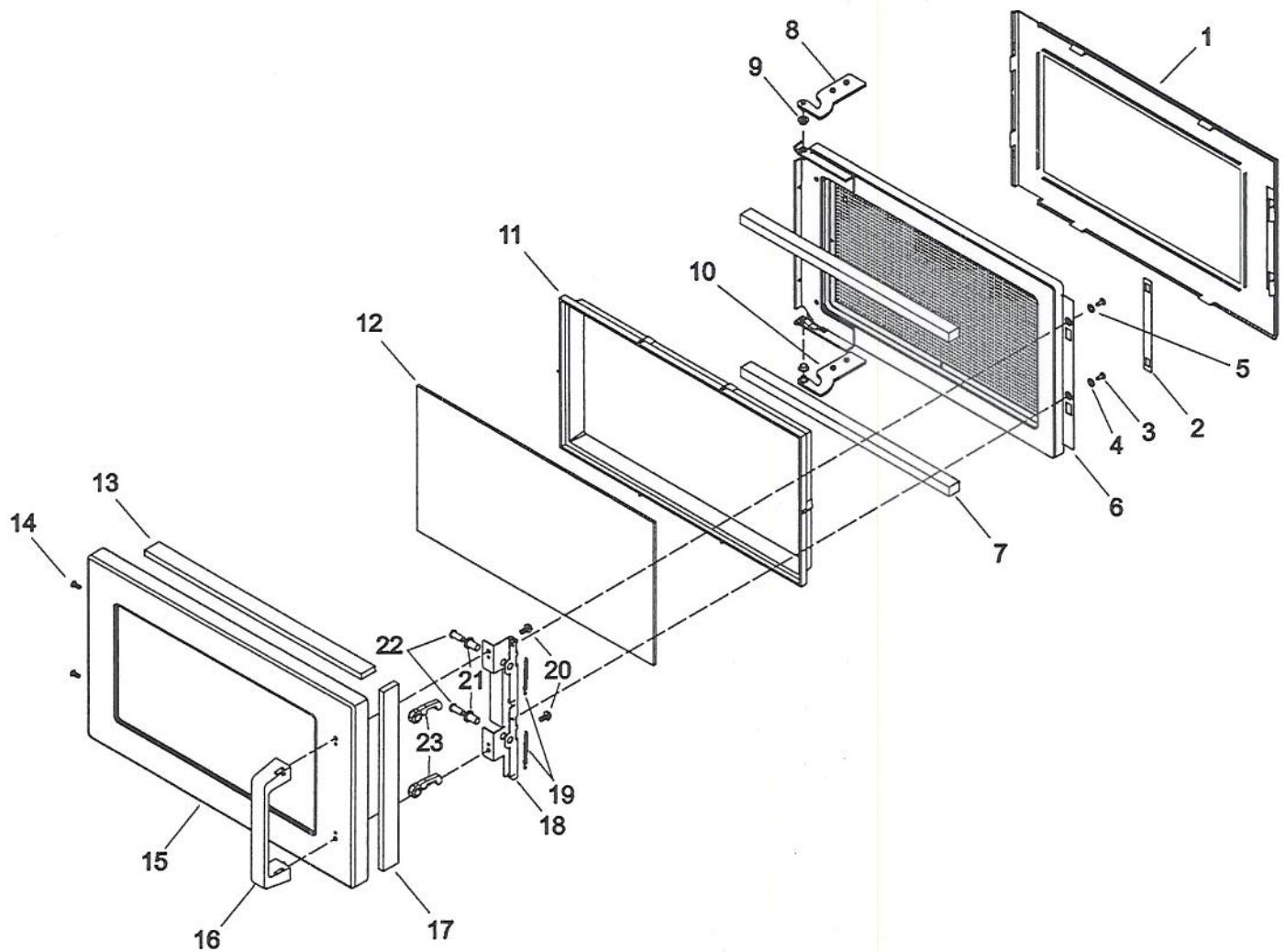
CDEC18E2 P1331231M

No.	PART NUMBER	DESCRIPTION	#SEE BELOW	1	2	3	4	5
1	13067001	ASSY, INNER DOOR		1	1			
2	12526201	LINKAGE, DR LATCH		1	1			
3	13047402	SCREW-TC/FLAT		2	2			
4	M0274066	WASHER, NYLON		1	1			
5	M0272503	WASHER		1	1			
6	12472202	DOOR RING WELD, E CT		1	1			
7	10966601	GASKET, NEOPRENE		2	2			
8	12126805	PLATE, HINGE (UPPER)		1	1			
9	5210001001	BUSHING, NYLON		2	2			
10	12126806	PLATE, HINGE (LOWER)		1	1			
11	R0150147	RETAINER, LENS		1	1			
12	59001236	WINDOW-OUTER		1	1			
13	12210804	ENERGY, STRIP		1	1			
14	12990402	SCREW-SM/TRUSS		2	2			
15	R9900567	DOOR, OUTER		1	1			
16	12133901	HANDLE-DOOR		1	1			
17	12210803	ENERGY, STRIP		2	2			
18	12114401	BRKT-DOOR LATCH		1	1			
19	C8893502	SPRING, DOOR LATCH		2	2			
20	12992307	SCREW-TF/HEX		2	2			
21	M0800501	SPACER		2	2			
22	59002069	PIN-LATCH		2	2			
23	12126901	LATCH-DOOR		2	2			



Section: DOOR

Model: CDEC18E2 P1331231M, CHDC5182 P1331228M,



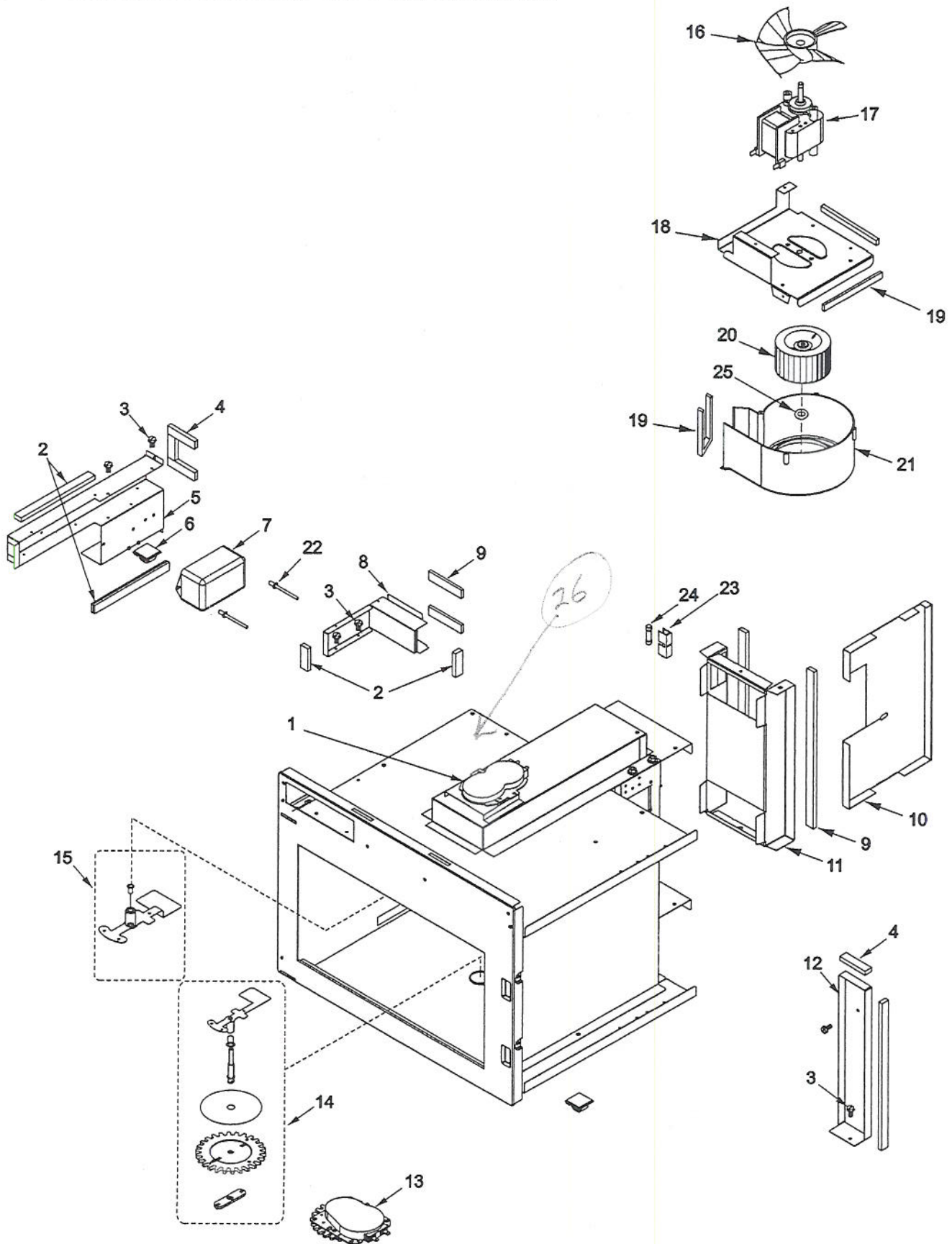
CHDC5182 P1331228M

CDEC18E2 P1331231M

No.	PART NUMBER	DESCRIPTION	#SEE BELOW					
				1	2	3	4	5
1	R0150197	MOTOR-STIRRER (230V)		1	1			
2	A3030330	GASKET, PER FT		5	5			
3	12990522	SCREW-SM/HEX		6	6			
4	A3030302	GASKET		3	3			
5	12135604	DUCT, CAV EXH-E CT		1	1			
6	M0104106	CLIP		2	2			
7	59001893	LINE FILTER		1	1			
8	12135704	ASSY, EXHAUST DUCT KIT		1	1			
9	10839706	GASKET (PER FOOT)		4	4			
10	59002000	FLOW DIVIDER		1	1			
11	59002075	DUCT-MAG OUTLET		1	1			
12	12525701	BARRIER, AIR		1	1			
13	R9900668	KIT, ANTENNA MOTOR (230V)		1	1			
14	R9900585	KIT, ANTENNA (BOTTOM)		1	1			
15	R0150185	ASSY, ANT/RETAINER		1	1			
16	B5706704	FAN BLADE		1	1			
17	12138105	BLOWER MOTOR		1	1			
18	12271103	BRKT, BLOWER MTG		1	1			
19	10839706	GASKET (PER FOOT)		3	3			
20	12138201	WHEEL-BLOWER		1	1			
21	12138302	SCROLL-BLOWER		1	1			
22	A4539638	RIVET-POP		2	2			
23	10091101	FUSE HOLDER		1	1			
-	M0216515	SCREW		1	1			
24	M0805203	FUSE, 20 AMP		1	1			
25	M0118901	CLIP		1	1			
26	12002678	CAVITY KIT- HDC18, 21 KIT INCLUDES TRAY, ANTENNAS & ANTENNA MOTORS		1	1			

Section: FUSES, ANTENNAS, BLOWER, DUCTS,

Model: CDEC18E2 P1331231M, CHDC5182 P1331228M,





**P/N 16027629**

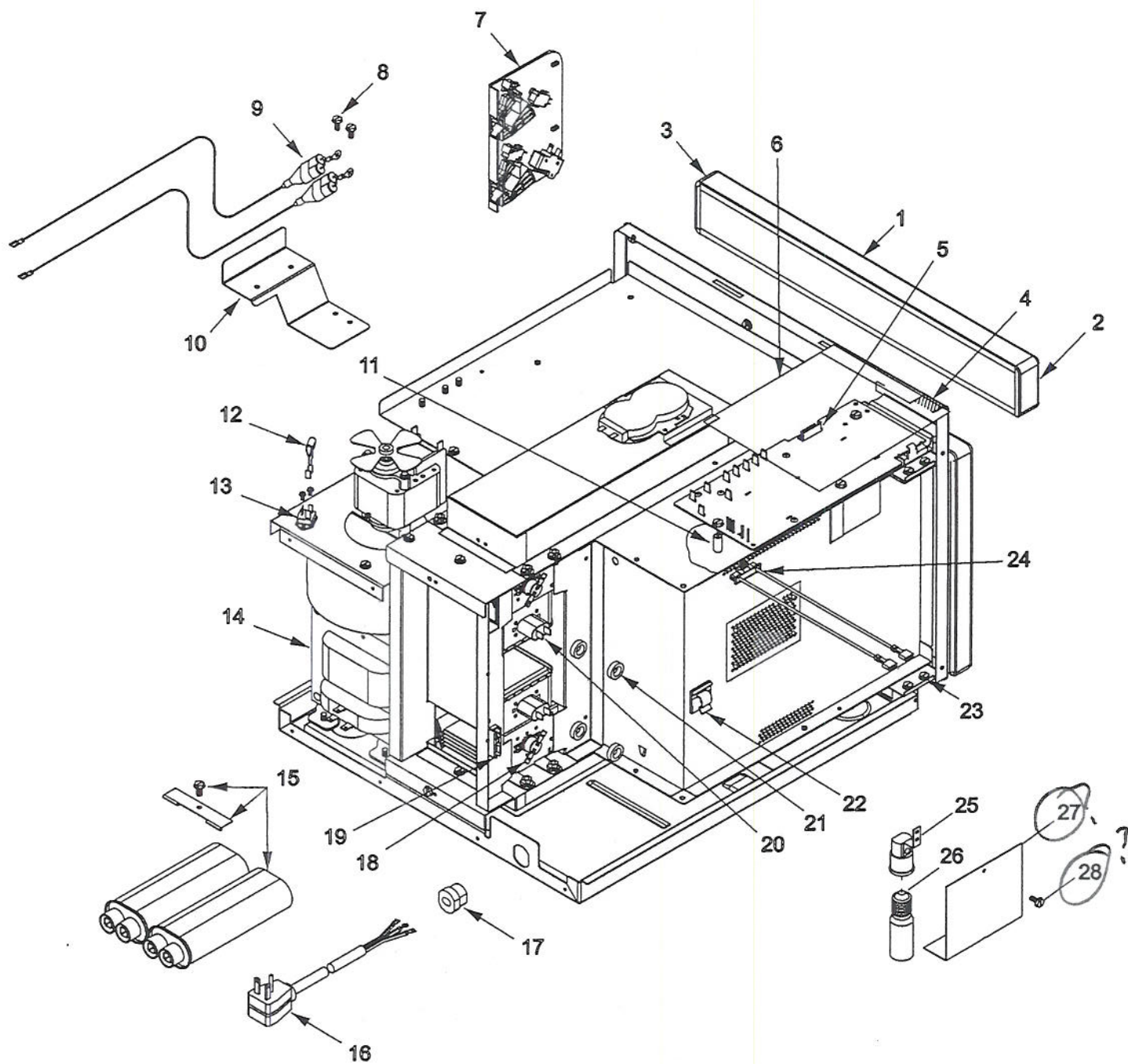
No.	PART NUMBER	DESCRIPTION	#SEE BELOW	1	2	3	4	5
1	R0000244	ASSY, TOUCH PANEL		1	-			
	R9900111	ASSY, TOUCH PANEL		-	1			
	- 12990523	SCREW-SM/HEX		4	4			
2	12131001	ENDCAP-ESC (RIGHT)		1	1			
3	12131002	ENDCAP-ESC (LEFT)		1	1			
4	M0275163	TAPE PER ROLL		1	1			
5	59002070	HV/LV BOARD		1	1			
	- 12991607	SCREW-TC/HEX		3	3			
6	12160602	SHIELD, SPILL		1	1			
7	59002060	ASSY, INTERLOCK SWITCH		1	1			
	- 12993002	SCREW-HI LO/PAN		2	2			
8	12990524	SCREW-SM/HEX		2	2			
9	R9800022	KIT, DIODE		2	2			
10	12529501	BRACKET, DIODE		1	1			
	- 12990522	SCREW-SM/HEX		2	2			
11	M0308801	CAP, PROTECTIVE-THREADED (RED)		2	2			
12	59002017	SNUBBER ASSEMBLY		1	1			
	- 12990522	SCREW-SM/HEX		2	2			
13	R0157373	KIT, TRIAC ASSY		1	1			
	- 12990522	SCREW-SM/HEX		2	2			
14	59001993	TRANSFORMER		1	1			
	- 12991606	SCREW-TC/HEX		4	4			
15	59001651	CAPACITOR-.85		1	1			
	- M0234422	SCREW		1	1			
	- 12132501	STRAP-CAPACITOR		1	1			
16	13033801	CORD-POWER		1	1			
17	M0370009	RELIEF-STRAIN		1	1			
18	B5684129	CUT OUT, THERMAL		2	2			
	B8380601	PLATE, THERMAL CUTOOT		2	2			
	- M0229916	SCREW T.C		4	4			
19	B5677203	TERMINAL BLOCK		1	1			
	- 12990524	SCREW-SM/HEX		1	1			
20	D7831007	MAGNETRON-T		2	2			
21	44780P01	TOROID (ARC SUPPRESSOR)		1	1			
22	M0104106	CLIP		1	1			
23	13048901	SCREW-TF/HEX		4	4			
24	59001874	THERMAL CUT OUT		1	1			
	- 12990522	SCREW-SM/HEX		1	1			
25	12163802	RECEPTACLE-EXPORT		1	1			
26	59002071	LIGHT BULB		1	1			
27	12544201	BARRIER,LAMP		1	1			
28	12992307	SCREW-TF/HEX		1	1			

CHDC5182 P1331228M  
CDEC18E2 P1331231M

06/07 \*COLOR CODE | (-)=NOT SHOWN | #=SERIES,SER PRE OR RUN NO. | 176533

Section: ELECTRICAL COMPONENTS

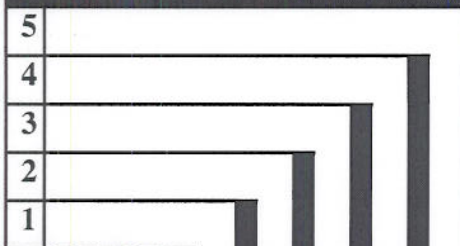
Model: CDEC18E2 P1331231M, CHDC5182 P1331228M,





CHDC5182 P1331228M

CDEC18E2 P1331231M



No.	PART NUMBER	DESCRIPTION	#SEE BELOW	1	2	3	4	5
1	NLA	RS5320013	MNL, SVC-INT'L	1	1			
2	NLA	59001618	MANUAL-OWNERS	1	1			
3	NLA	59001679	MANUAL, PRODU	1	1			
4	NLA	59001690	INSTR-QUICK S	1	1			
5	NLA	R0193551	BIT FOR TORX	1	1			
6	59001702	HARNESS- OVEN		1	1			
7	59002065	HARNESS, HI VOLT		1	1			
8	59002066	HARNESS, LW ANTENNA		1	1			

# Section: WIRING INFORMATION

Model: CDEC18E2 P1331231M, CHDC5182 P1331228M,

