

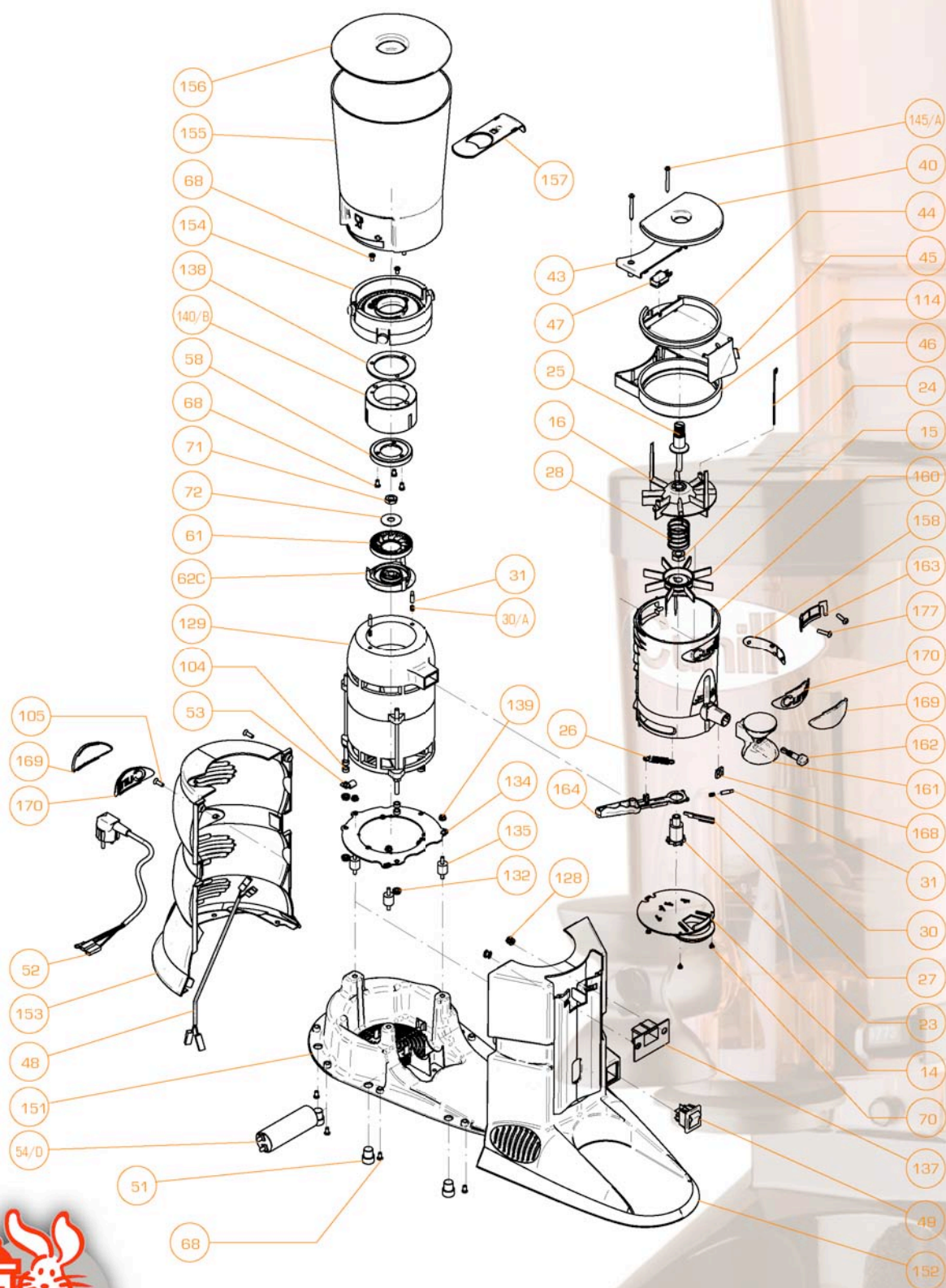
MOVIE

Pieces

Silencers



MOVIE



Since 1957

MOVIE

REF.	DENOMINATION	CANT.	REF.	DENOMINATION	CANT.
104	DISPENSER COLLARS 5,25x10x6,5	6	164	DISPENSER LEVER 2003	1
105	SCREW M5x16 DIN7991	2	168	DISPENSER NUT	1
114	AUTOMATIC SUPPLEMENTARY RING	1	169	CUSTOMIZED PLAQUE DISPENSER/COFFEE GRINDER	2
128	SPECIAL NUT M5 SILENCER MODELS	2	170	CUNILL PLAQUE DISPENSER/COFFEE GRINDER	2
129	MOTOR N°6 NOBEL ETIOPIA 230V-50HZ	1	177	SCREW M5x20 ISO 7380	2
132	NUT M6 DIN 6923.8	4	49	SWITCH	1
134	METAL MOTOR SUPPORT "SILENCER"	1	23	RATCHET SHAFT	1
135	SILENBLOCK	3	24	HEXAGONAL NUT M12 DIN 934	1
137	COFFEE EXIT RUBBER	1	25	DISPENSER ADJUSTMENT NUT	1
138	ADJUSTMENT DISK INFERIOR RUBBER	1	26	DISPENSER LEVER RETRACTION SPRING	1
139	NUT M5 SILENBLOCK DIN 6923.8	3	27	DISPENSER HOOP	1
14	DISPENSER BASE PLATE DIRECT INTAKE (SEAL-SAVER)	1	28	STARPIECE SPRING	1
140/B	GRINDWHEEL HOUSING Ø65 "SILENCER"; "HAWAI' 02"	1	30/A	ADJUSTMENT PAWL SPRING MOVIE	3
145/A	SCREW D4,2x45 DIN 7981	2	31	LEVER PAWL	3
15	FIX STARPIECE	1	40	AUTOMATIC DISPENSER COVER	1
151	BOTTOM MOVIE GRINDER	1	43	MICRO SUPERIOR COVER	1
152	FRONTAL BODY MOVIE	1	44	AUTOMATIC SET RING	1
153	BACK BODY MOVIE	1	45	AUTOMATIC FLAG	1
154	ADJUSTMENT DISK (WITHOUT LEVER PAWL)	1	46	STARPIECE AXLE	1
155	HOPPER MOVIE	1	47	AUTOMATIC MICRO	1
156	HOPPER COVER MOVIE	1	48	FLAG MICRO CABLE	1
157	DOSING PIECE	1	51	CIRCULAR RUBBER FOOT	6
158	LATERAL DISPENSER COVER 2003	1	52	ELECTRIC CABLE WITH PLUG	1
16	UPPER STARPIECE + MEDIUM STARPIECE	1	53	CABLE METAL CLIP	1
160	DISPENSER 600GR. 2003	1	54/D	CONDENSER 14µF NOBLE-ETIOPIA-BIMOTOR	1
161	ROTATORY PRESS	1	58	UPPER BLADE Ø65	1
162	ROTATORY PRESS FIXATION	1	61	INFERIOR BLADE Ø65	1
163	FINGER PROTECTION	1	62C	ALLUMINIUM EXPELER "SILENCER"	1
			68	SCREW M5x8 DIN 7985	14
			70	SCREW D3,5x6,5DIN 7981	3
			71	NUT FOR BLADES FIXATION	1
			72	WASHER FOR BLADES FIXATION	1

