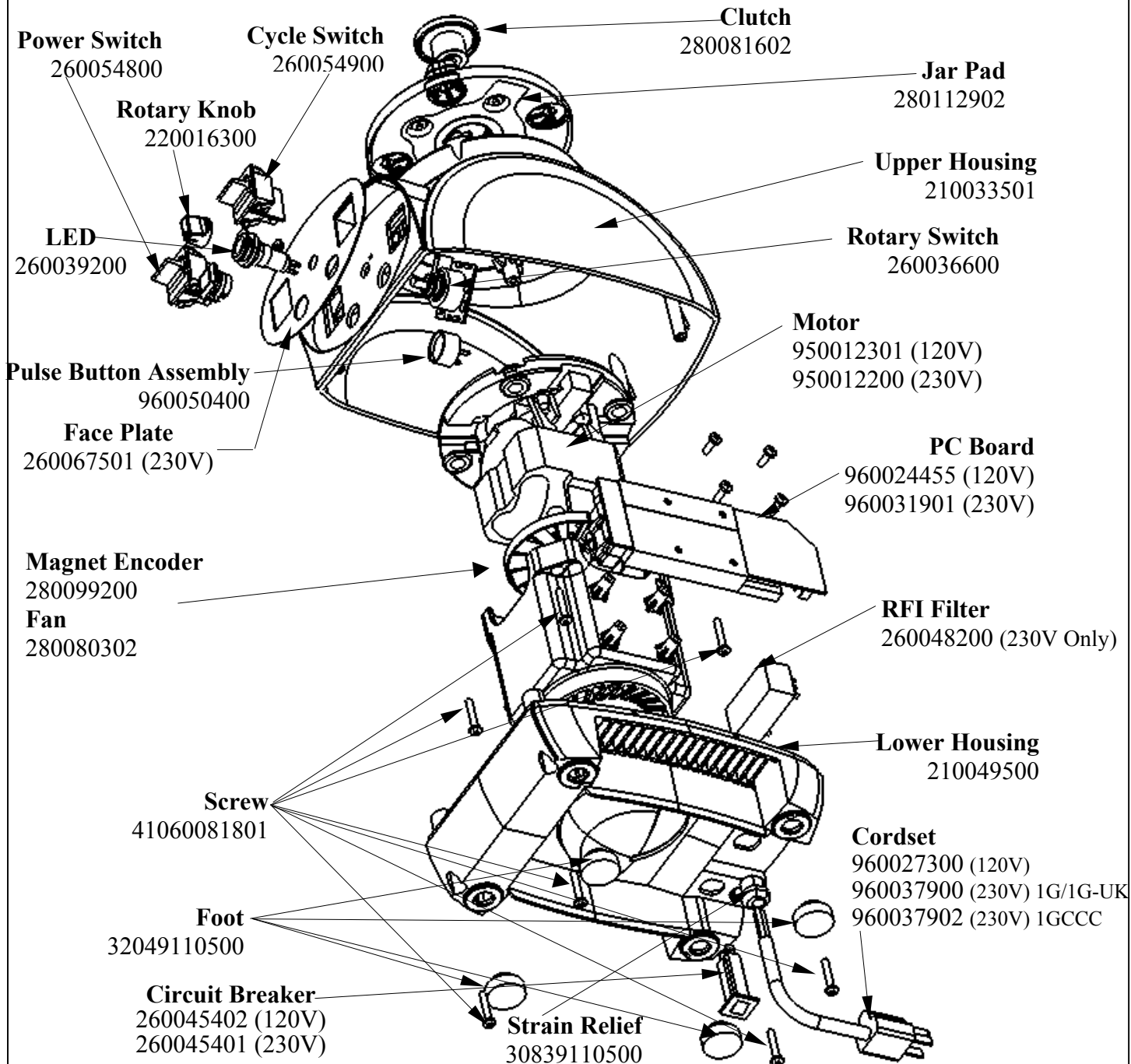


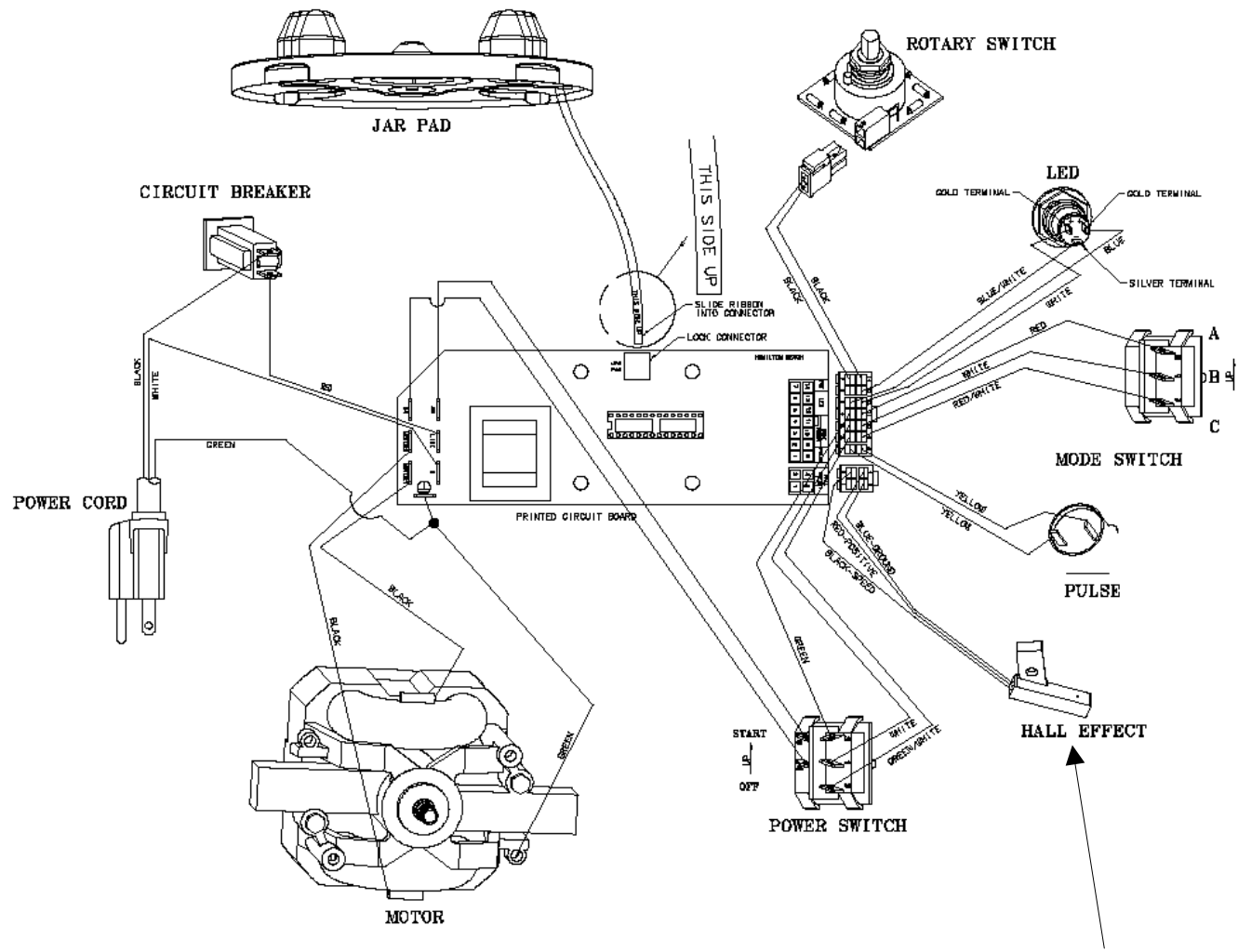
91555/1G91555 **Exploded Service Drawing**

PROPRIETARY RIGHTS NOTICE This document and all information contained within it is the property of Hamilton Beach/Proctor-Silex, Inc. (HB/PS). It is confidential and proprietary and has been provided to you for a limited purpose. It must be returned upon request or destroyed as set forth in the Specification Notice. Disclosure, reproduction or use of this document and any information contained within it, in full or in part, for any purpose is forbidden without the prior written consent of HB/PS. No photographs may be taken of any article fabricated or assembled from this document without the prior written consent of HB/PS.



HAMILTON BEACH / PROCTOR-SILEX, INC. 4421 WATERFRONT DRIVE GLEN ALLEN, VA 23060		CME-2626: Removed 260065702, 980082300, & 260050500			ISSUE CODE	
DRAWN BY:	ENG. IN CHG.	DATE:	APPROVED BY:		CS	SP
	B.Williams	8/9/05				
INITIAL USE:	PICT. REF.	SHEET	DRAWING NO.	REV.		
		1 / 5	SVC91555A	F		

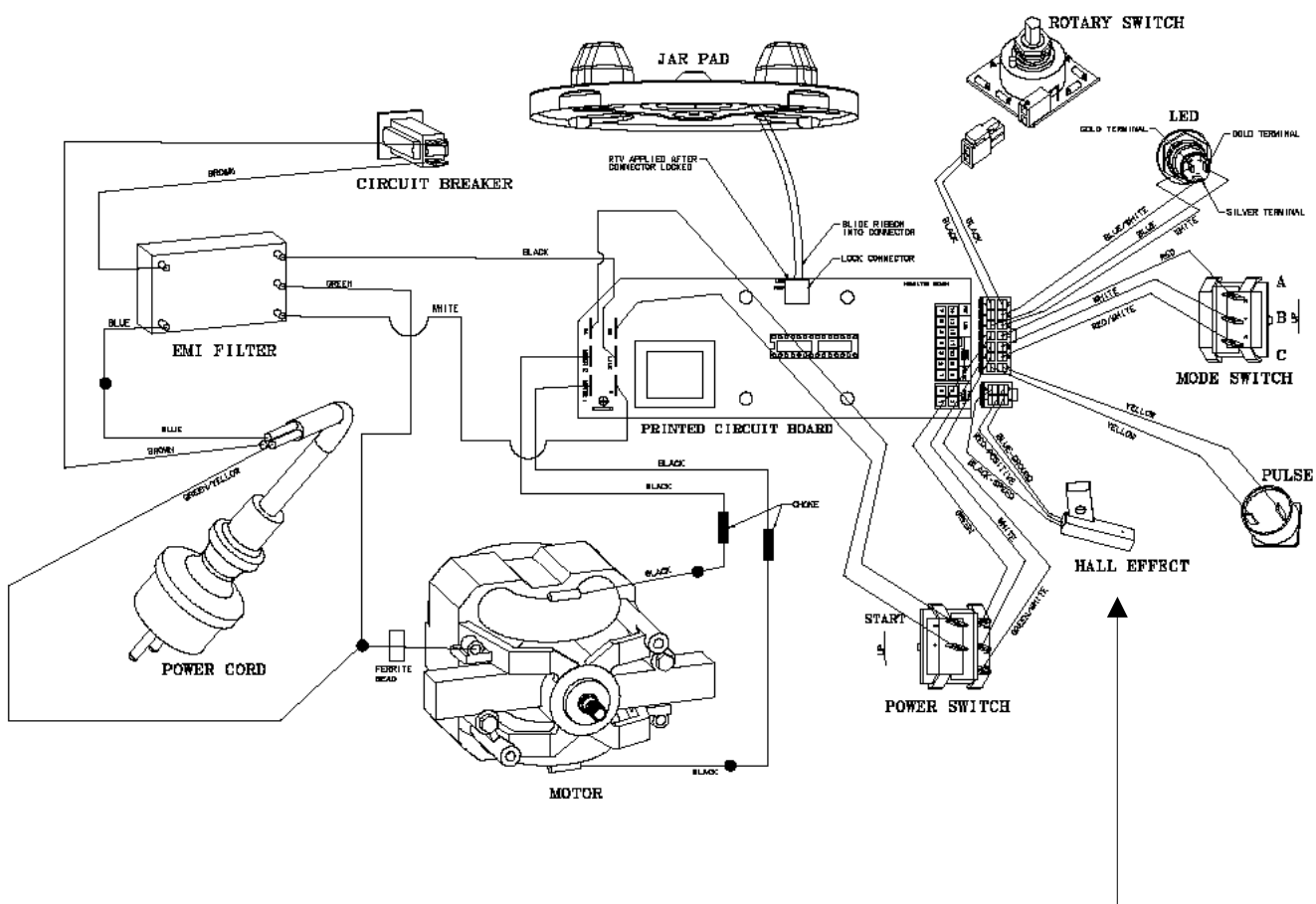
91555/1G91555
Exploded Service Drawing



91555 Wiring Diagram
Switch – Hall Effect
280081903

HAMILTON BEACH / PROCTOR-SILEX, INC. 4421 WATERFRONT DRIVE GLEN ALLEN, VA 23060		CME-2626: Removed 260065702, 980082300, & 260050500			ISSUE CODE	
DRAWN BY:	ENG. IN CHG. B. Williams	DATE: 8/9/05	APPROVED BY:		CS	SP
INITIAL USE:	PICT. REF.	SHEET 2 / 5	DRAWING NO. SVC91555A	REV. F		

91555/1G91555
Exploded Service Drawing



1G91555 Wiring Diagram

Switch – Hall Effect
280081903

HAMILTON BEACH / PROCTOR-SILEX, INC. 4421 WATERFRONT DRIVE GLEN ALLEN, VA 23060		CME-2626: Removed 260065702, 980082300, & 260050500			ISSUE CODE	
DRAWN BY:	ENG. IN CHG.	DATE:	APPROVED BY:		CS	SP
	B.Williams	8/9/05				
INITIAL USE:	PICT. REF.	SHEET	DRAWING NO.	REV.		
		3 / 5	SVC91555A	F		

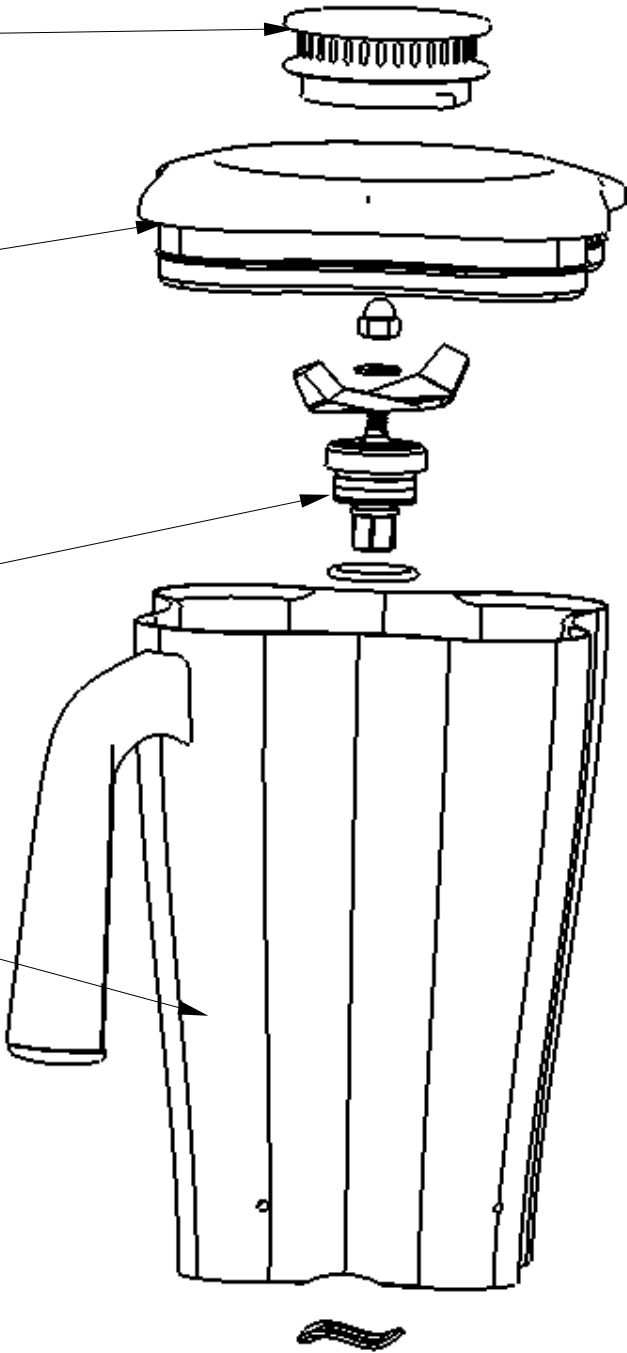
91555/1G91555
Exploded Service Drawing

Fill Cap
280079900

Container Cover
280121200

Cutter Assembly
980033201

Container
940006601
Container Complete
6126-91515



HAMILTON BEACH / PROCTOR-SILEX, INC. 4421 WATERFRONT DRIVE GLEN ALLEN, VA 23060		CME-2626: Removed 260065702, 980082300, & 260050500			ISSUE CODE	
DRAWN BY:	ENG. IN CHG. B.Williams	DATE: 8/9/05	APPROVED BY:		CS	SP
INITIAL USE:	PICT. REF.	SHEET 4 / 5	DRAWING NO. SVC91555A	REV. F		

91555/1G91555 Exploded Service Drawing

Installing the magnet and fan on Tempest and Summit motors.

- The armature must be supported from the threaded end to protect the bearings. Position the counter bored side of the magnet to the armature shaft. Press the magnet on to a depth of .630 with the tool that has been provided. This will leave a .035 gap between the magnet and the lower bearing support.
- Install the hall effect switch. Using a .005 feeler gauge between the switch and the magnet set the gap between switch and magnet.
- If installing a new hall effect switch, wire tie the leads with one wire from the motor to the upper motor frame.
- Apply Loctite 770 plastic primer to the mating surface of the fan.
- Apply Loctite 380 to the knurled portion of the shaft.
- Press on the fan using the magnet as a stop. Ensure the magnet positioning does not change.
- Apply a small bead of Loctite 380 to the contact edge of fan and shaft.



FAN

SWITCH – HALL EFFECT

MAGNET

HAMILTON BEACH / PROCTOR-SILEX, INC. 4421 WATERFRONT DRIVE GLEN ALLEN, VA 23060		CME-2626: Removed 260065702, 980082300, & 260050500			ISSUE CODE	
DRAWN BY:	ENG. IN CHG.	DATE:	APPROVED BY:		CS	SP
	B.Williams	8/9/05				
INITIAL USE:	PICT. REF.	SHEET	DRAWING NO.	REV.		
		5 / 5	SVC91555A	F		