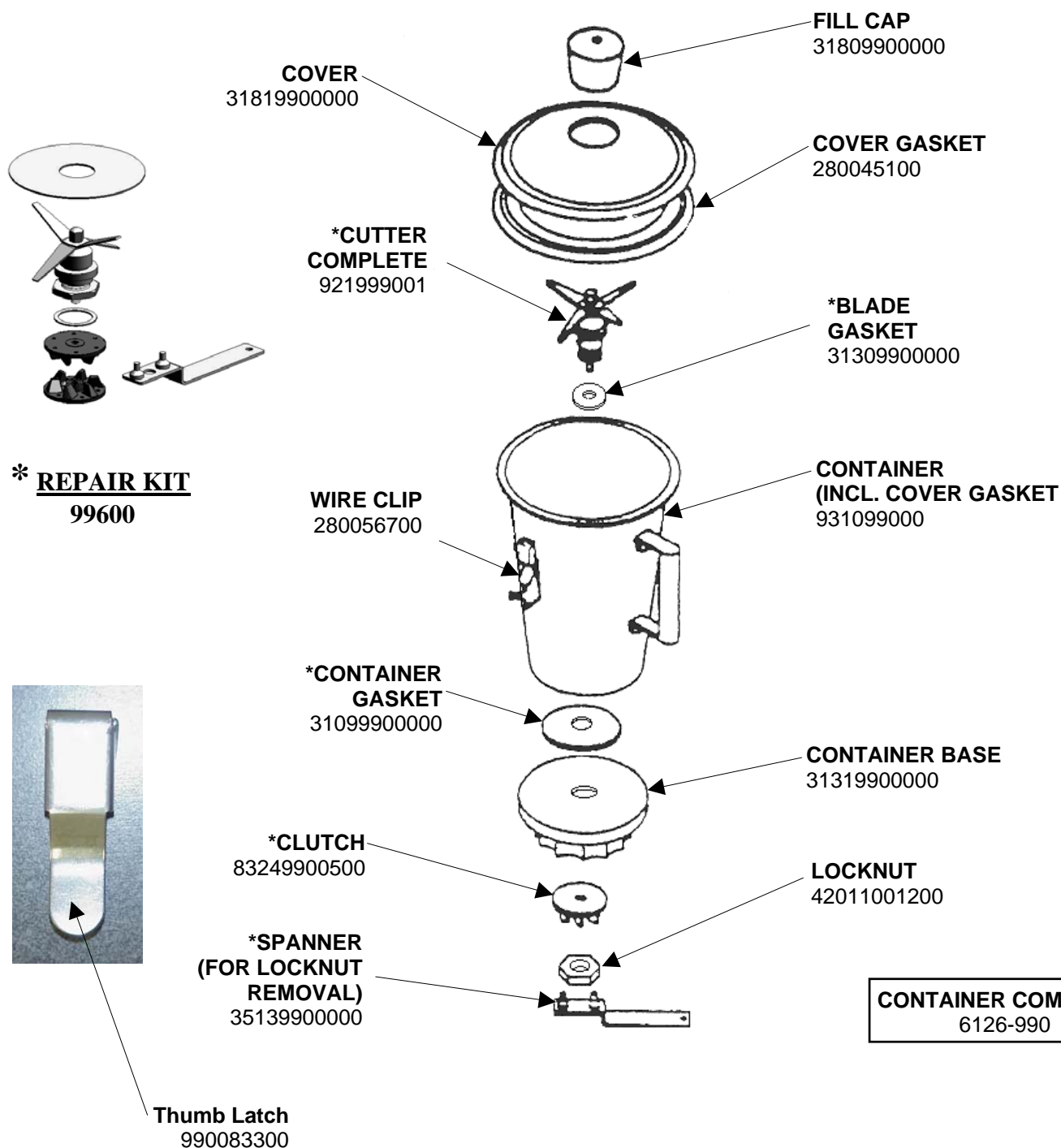


## Replacement Parts Diagram

### Model 990 (Series A-E)

**PROPRIETARY RIGHTS NOTICE** This document and all information contained within it is the property of Hamilton Beach Brands, Inc. (HBB). It is confidential and proprietary and has been provided to you for a limited purpose. It must be returned or destroyed upon request. Disclosure, reproduction or use of this document and any information contained within it, in full or in part, for any purpose is forbidden without the prior written consent of HBB. No photographs may be taken of any article fabricated or assembled from this document without the prior written consent of HBB.

## CONTAINER ASSEMBLY



**Hamilton Beach**  
4421 Waterfront Drive  
Glen Allen, VA 23060

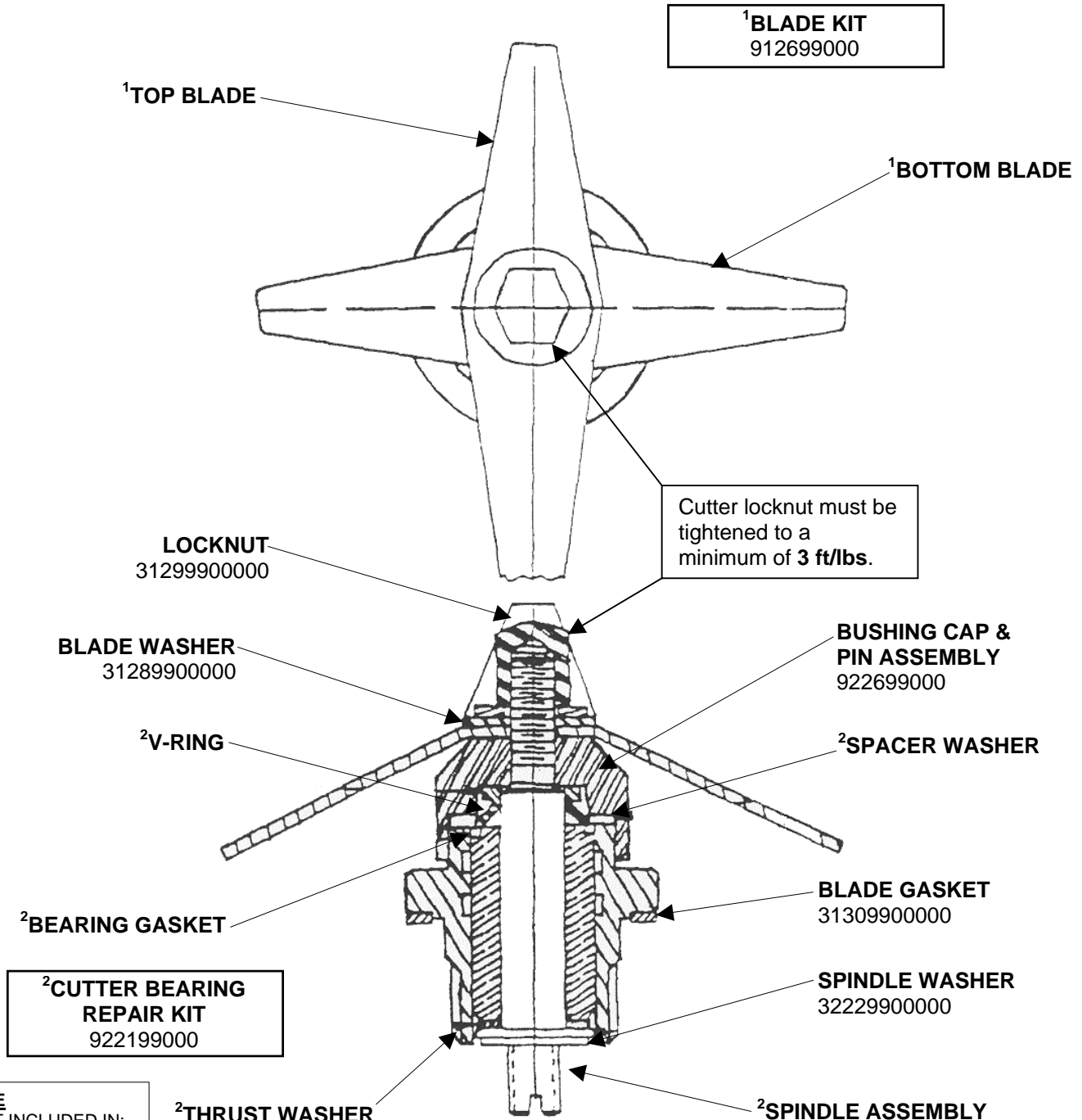
Revision Description:	Added Thumb Latch						
Request Number:	HQE-6691	Revision Date:	7/22/08	Approved by:			
Issue Code(s):	CS, SP	Page:	1 of 4	Document #:	5100019XX	Rev:	B

## Replacement Parts Diagram

### Model 990 (Series A-E)

**PROPRIETARY RIGHTS NOTICE** This document and all information contained within it is the property of Hamilton Beach Brands, Inc. (HBB). It is confidential and proprietary and has been provided to you for a limited purpose. It must be returned or destroyed upon request. Disclosure, reproduction or use of this document and any information contained within it, in full or in part, for any purpose is forbidden without the prior written consent of HBB. No photographs may be taken of any article fabricated or assembled from this document without the prior written consent of HBB.

## CUTTER ASSEMBLY



#### NOTE

PART INCLUDED IN:  
1 - BLADE KIT 912699000  
2 - CUTTER BEARING  
REPAIR KIT 922199000

**Hamilton Beach**  
4421 Waterfront Drive  
Glen Allen, VA 23060

Revision Description:

Added Thumb Latch

Request Number:

HQE-6691

Revision Date:

7/22/08

Approved by:

Issue Code(s):

CS, SP

Page:

2 of 4

Document #:

**5100019XX**

Rev:

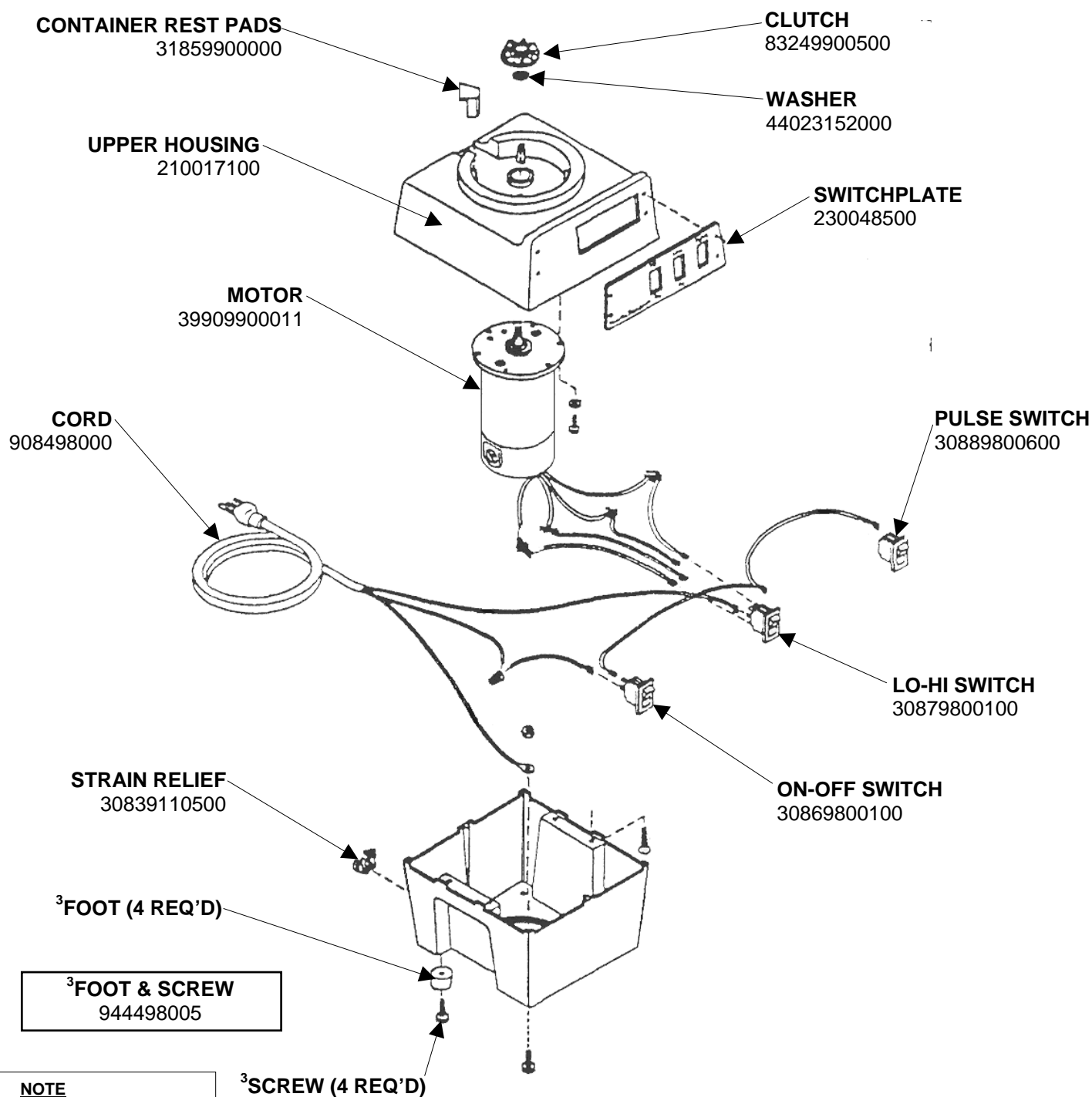
**B**

## Replacement Parts Diagram


### Model 990 (Series A-E)

**PROPRIETARY RIGHTS NOTICE** This document and all information contained within it is the property of Hamilton Beach Brands, Inc. (HBB). It is confidential and proprietary and has been provided to you for a limited purpose. It must be returned or destroyed upon request. Disclosure, reproduction or use of this document and any information contained within it, in full or in part, for any purpose is forbidden without the prior written consent of HBB. No photographs may be taken of any article fabricated or assembled from this document without the prior written consent of HBB.

## HOUSING ASSEMBLY



**NOTE**  
PART INCLUDED IN:  
3 - FOOT & SCREW 944498005

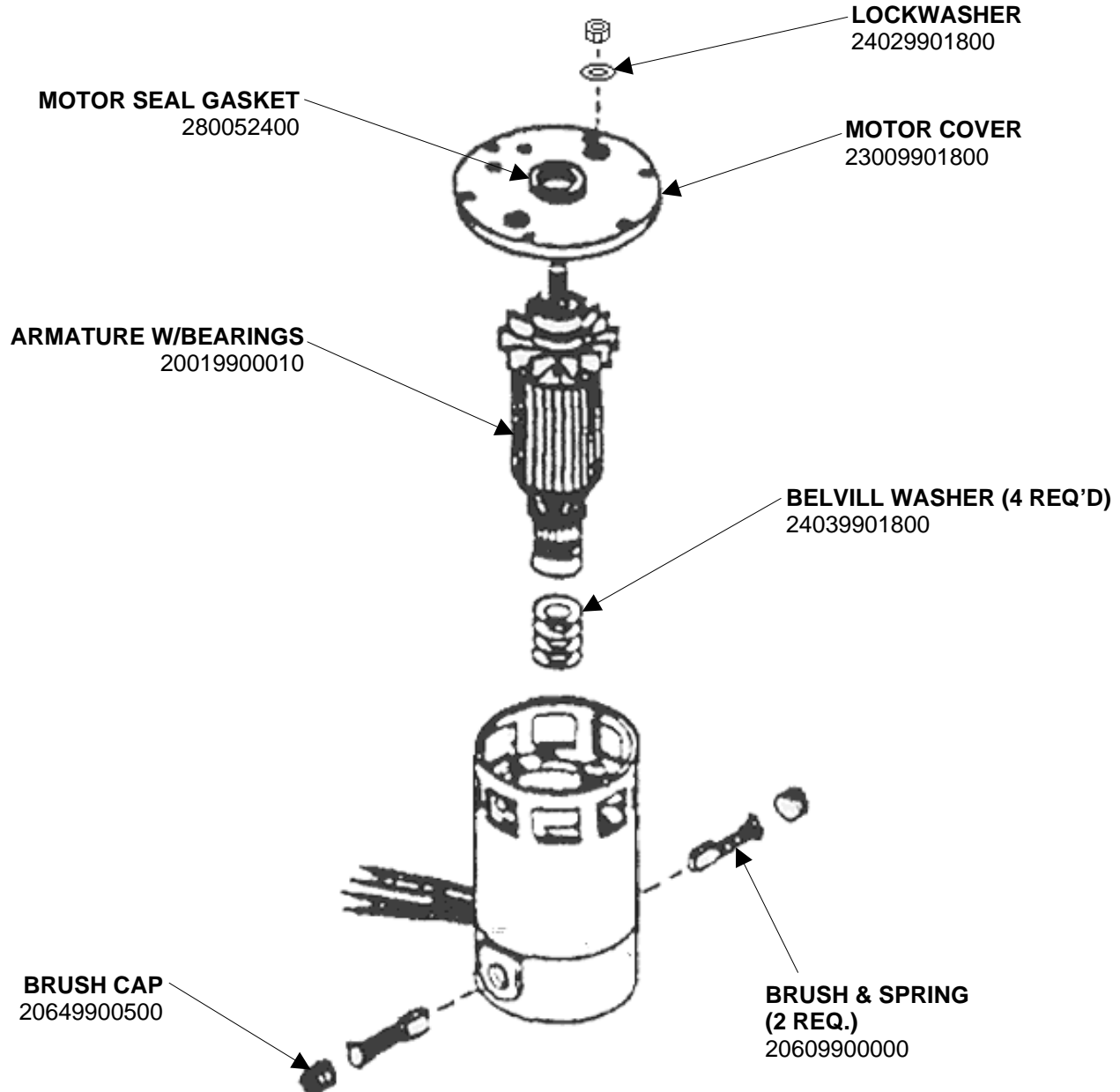
 4421 Waterfront Drive Glen Allen, VA 23060	Revision Description:		Added Thumb Latch					
	Request Number:	HQE-6691	Revision Date:	7/22/08	Approved by:			
	Issue Code(s):	CS, SP	Page:	3 of 4	Document #:	5100019XX	Rev:	B


## Replacement Parts Diagram

### Model 990 (Series A-E)

**PROPRIETARY RIGHTS NOTICE** This document and all information contained within it is the property of Hamilton Beach Brands, Inc. (HBB). It is confidential and proprietary and has been provided to you for a limited purpose. It must be returned or destroyed upon request. Disclosure, reproduction or use of this document and any information contained within it, in full or in part, for any purpose is forbidden without the prior written consent of HBB. No photographs may be taken of any article fabricated or assembled from this document without the prior written consent of HBB.

### MOTOR ASSEMBLY



 4421 Waterfront Drive Glen Allen, VA 23060	Revision Description:		Added Thumb Latch					
	Request Number:	HQE-6691	Revision Date:	7/22/08	Approved by:			
	Issue Code(s):	CS, SP	Page:	4 of 4	Document #:	5100019XX	Rev:	B