



**IMPORTANT NOTE:** See page 3 for important information on how to use this Replacement Parts List.

# HEAT-MAX®

## Heated Wells

### *RHW and RCTHW Series*

RHW-1

RCTHW-1

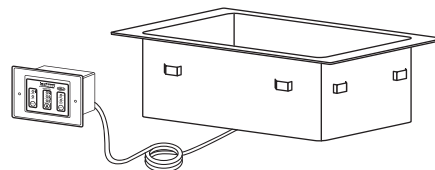
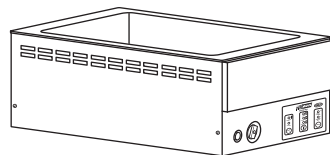
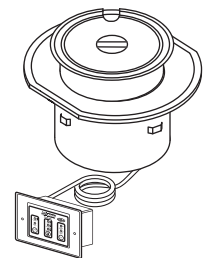
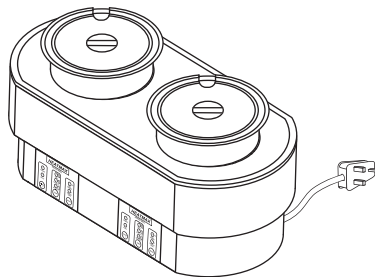
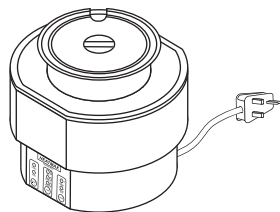
RCTHW-6

RHW-1B

RCTHW-1B

RCTHW-6B

RHW-2



# Replacement Parts List

# HATCO HEAT-MAX® HEATED WELLS

## RHW-1 and RHW-2 Models

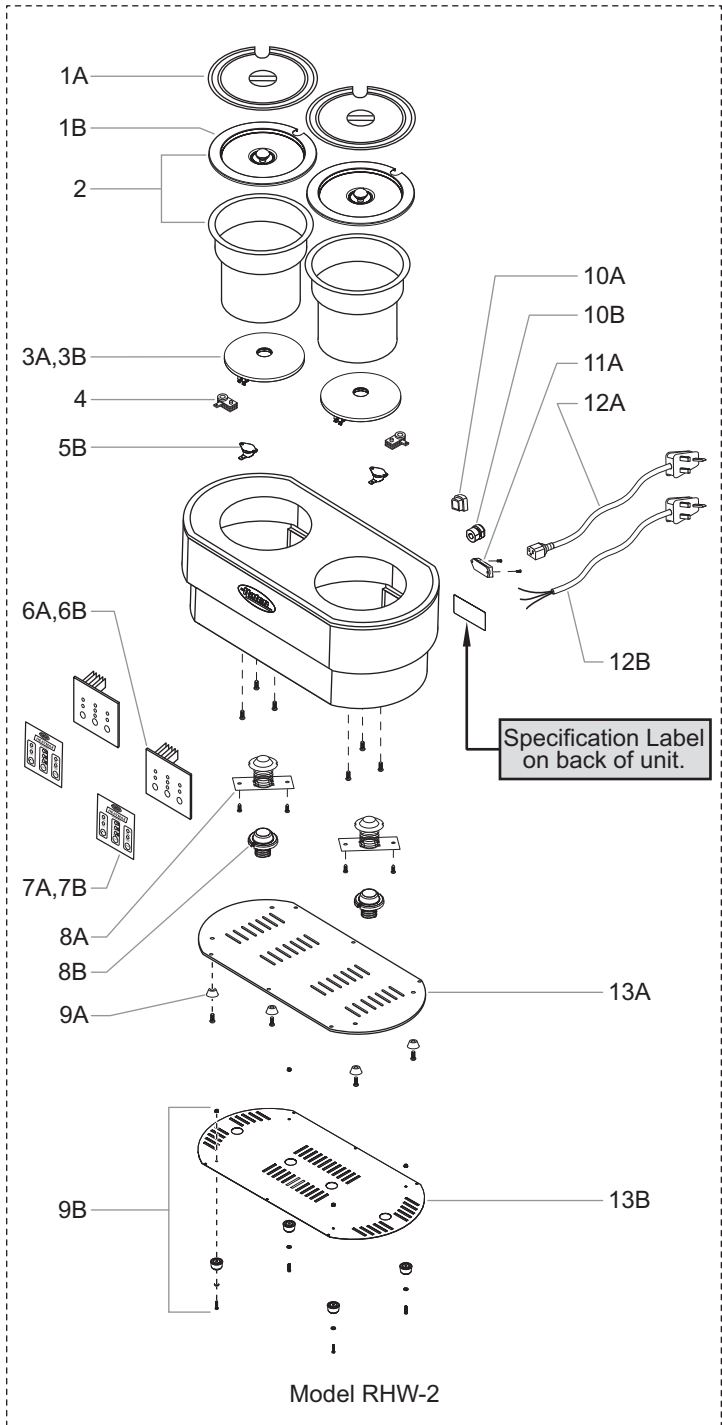
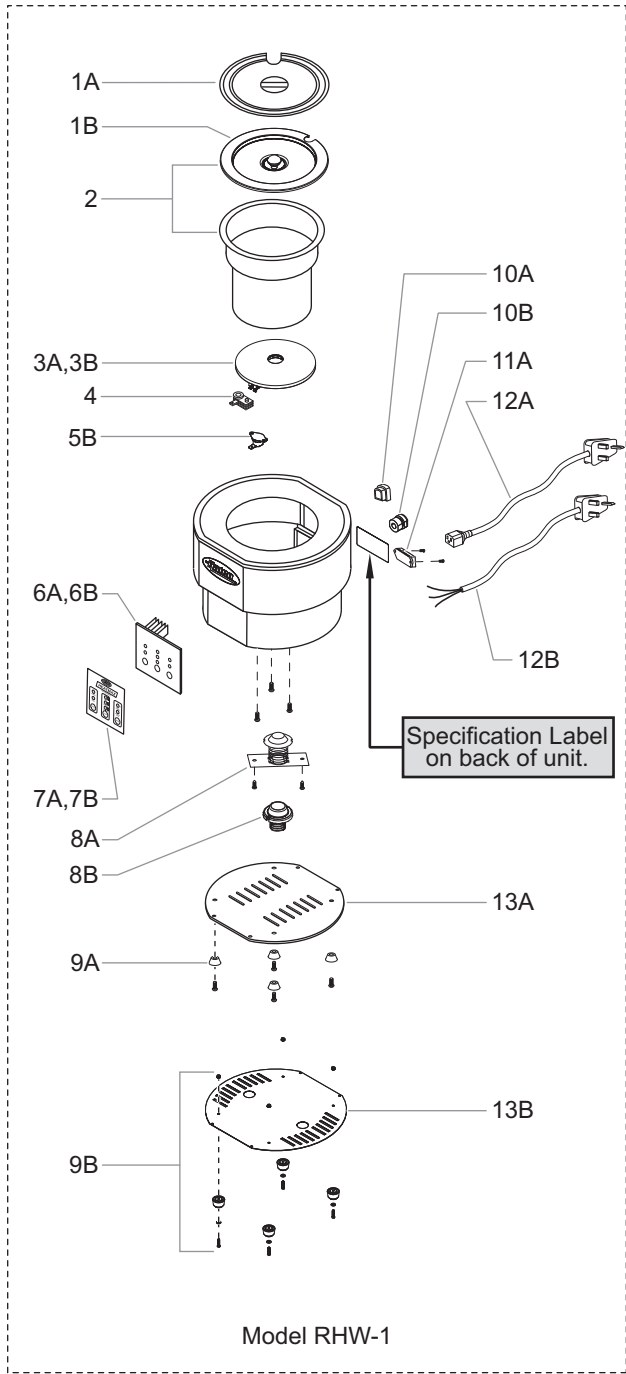
Model Designation

R H W - X

Quantity of Wells

Heated Wells

Round



## IMPORTANT! — HOW TO USE THIS SECTION

This section is for RHW-1 and RHW-2 Model heated wells built before and after a manufacturing and part number change. Heated wells with a manufacturing date code of 0949 and older use **Item** numbers with the "A" suffix. Heated wells with a manufacturing date code of 0950 and newer use **Item** numbers with the "B" suffix. **Item** numbers that are not broken down with "A" or "B" suffixes are the same for all manufacturing date codes.

Part numbers of "N/A" indicate the item does not work with the designated unit or is no longer available.

**NOTE:** The last four digits in a ten digit numerical serial number are the manufacturing date code.

Example: Serial number 9625060951 has a date code of "0951" which indicates the following: 0951

Year 2009  
Week Fifty-One

## PARTS LIST FOR RHW-1 AND RHW-2 MODELS — 230 V

Item	Description	Part No.	Qty.
1A	Lid Assembly	N/A	
1B	Lid w/Knob	04.19.1152.00	1–2
2	Pan, 10 liter (includes Item 1B)	R04.19.1001.00	1–2
3A	Heating Element, 1250 W	X02.05.595.00 or 02.05.595.00	1–2
3B	Heating Element, 1250 W	02.05.595.00	1–2
4	High Limit Thermostat, 240°C	02.16.132.00	1–2
5A	Thermal Disk	N/A	
5B	Thermal Disk	R02.16.154.00	1–2
6A	Control Board	X02.01.238.00	1
6B	Control Board †	02.01.238.00	1
7A	Decal, Control Panel	X07.03.469.00	1–2
7B	Decal, Control Panel	07.01.333.00	1–2
8A	High Limit Sensor Assembly	X02.16.129.00	1–2
8B	High Limit Sensor and Harness Assembly	R02.18.286.00	1–2
9A	Foot	X05.30.094.00	4
9B	Foot Assembly	R05.30.148.04	1
10A	Strain Relief, Cord	X02.20.338.00	1
10B	Strain Relief, Cord	02.20.369.00	1

Item	Description	Part No.	Qty.
11A	Electrical Socket for Plug	X02.18.188.00	1
11B	Electrical Socket for Plug	N/A	
12A	Power Cord Assembly	X02.18.187.00	1
12B	Power Cord		
	AS-3112	02.18.105.00	1
	CEE 7/7 Schuko	02.18.038.00	1
	BS-1363	02.18.068.00	1
13A	Bottom Cover		
	RHW-1	X04.19.1005.00	1
	RHW-2	X04.19.1007.00	1
13B	Bottom Cover		
	RHW-1	04.42.220.00	1
	RHW-2	04.42.228.00	1
A	Wiring Diagram		
	RHW-1	10-01-363	
	RHW-2	10-01-364	
B	Wiring Diagram		
	RHW-1	10-01-815	
	RHW-2	10-01-842	

† Control Board (P/N 02.01.238.00) has three DIP switches. For RHW Series units, use the following settings:  
1 = OFF, 2 = OFF, 3 = OFF.

**NOTE:** Quantities shown as a range (example = "1–2") are dependent upon the number of wells in a unit.

### CAUTION

Use of replacement parts other than those supplied by Hatco Corporation may result in damage to the unit or injury to personnel and will void all warranties.

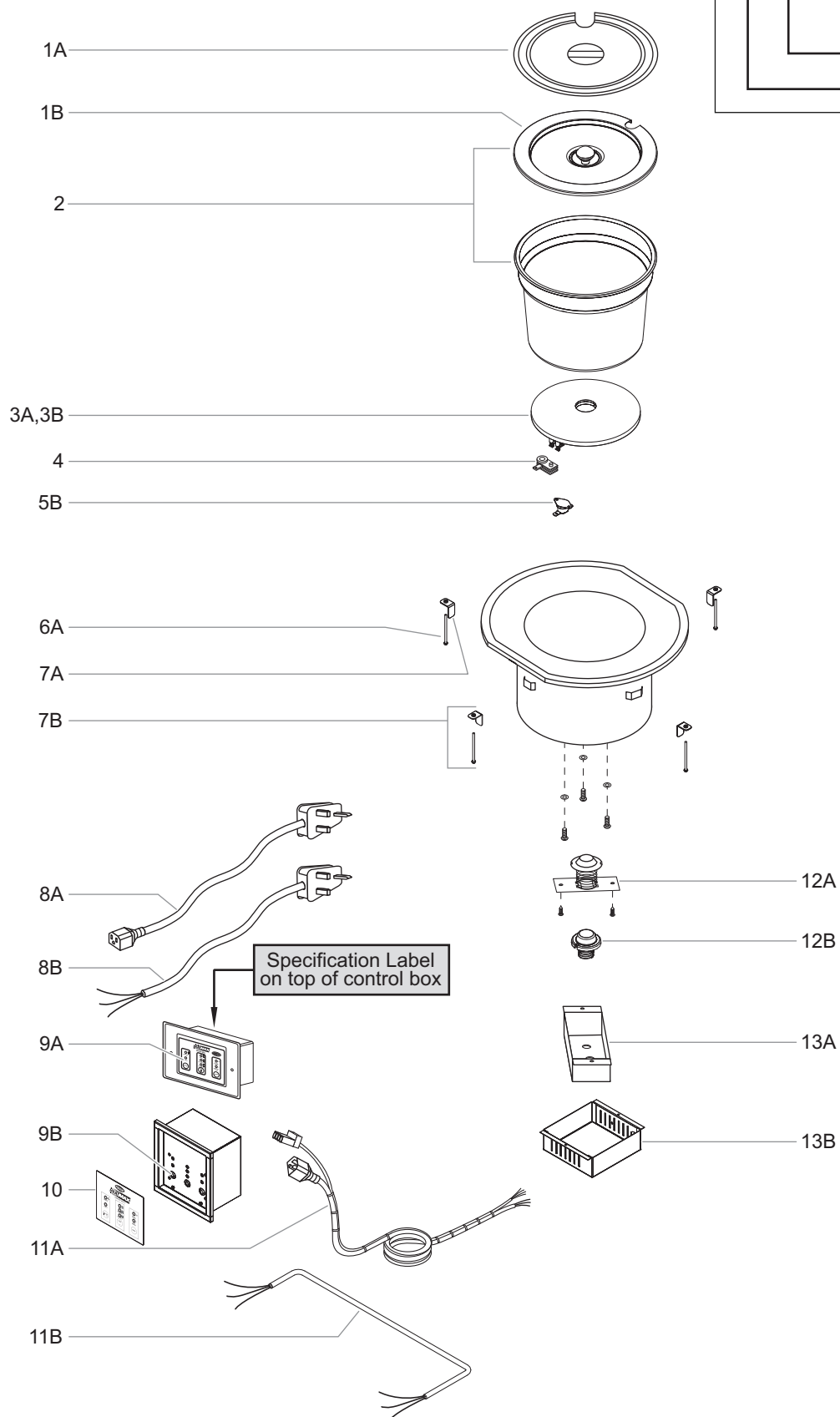
# HATCO HEAT-MAX® HEATED WELLS

## RHW-1B Model

### Model Designation

**R H W - X B**

Built-In  
Quantity of Wells  
Heated Wells  
Round



## IMPORTANT! — HOW TO USE THIS SECTION

This section is for RHW-1B Model built-in heated wells built before and after a manufacturing and part number change. Built-in heated wells with a manufacturing date code of 0947 and older use **Item** numbers with the "A" suffix. Built-in heated wells with a manufacturing date code of 0948 and newer use **Item** numbers with the "B" suffix. **Item** numbers that are not broken down with "A" or "B" suffixes are the same for all manufacturing date codes.

Part numbers of "N/A" indicate the item does not work with the designated unit or is no longer available.

**NOTE:** The last four digits in a ten digit numerical serial number are the manufacturing date code.

**Example:** Serial number 9625060951 has a date code of "0951" which indicates the following: 0951

Year 2009 —  
Week Fifty-One —

## PARTS LIST FOR RHW-1B MODELS — 230 V

Item	Description	Part No.	Qty.
1A	Lid Assembly	N/A	
1B	Lid w/Knob	04.19.1152.00	1
2	Pan, 10 liter (includes Item 1B)	R04.19.1001.00	1
3A	Heating Element, 1250 W	X02.05.595.00	
		or 02.05.595.00	1
3B	Heating Element, 1250 W	02.05.595.00	1
4	High Limit Thermostat, 240°C	02.16.132.00	1
5A	Thermal Disk	N/A	
5B	Thermal Disk	R02.16.154.00	1
6A	Screw, Mounting Bracket	X05.04.518.00	4
6B	Screw, Mounting Bracket	N/A	
7A	Mounting Bracket	X04.19.1088.00	4
7B	Mounting Bracket, Assembly (set of four)	R04.42.334.04	1

Item	Description	Part No.	Qty.
8A	Power Cord Assembly	X02.18.187.00	1
8B	Power Cord		
	AS-3112	02.18.105.00	1
	CEE 7/7 Schuko	02.18.038.00	1
	BS-1363	02.18.068.00	1
9A	Control Board	X02.01.238.00	1
9B	Control Board †	02.01.238.00	1
10	Decal, Control Panel	07.01.333.00	1
11A	Control Cord Assembly	X02.18.156.00	1
11B	Control Cord Assembly	02.18.293.00	1
12A	High Limit Sensor Assembly	X02.16.129.00	1
12B	High Limit Sensor and Harness Assembly	R02.18.286.00	1
13A	Box Cover	X04.19.1064.00	1
13B	Box Cover	04.42.299.00	1
A	Wiring Diagram	10-01-363	
B	Wiring Diagram	10-01-814	

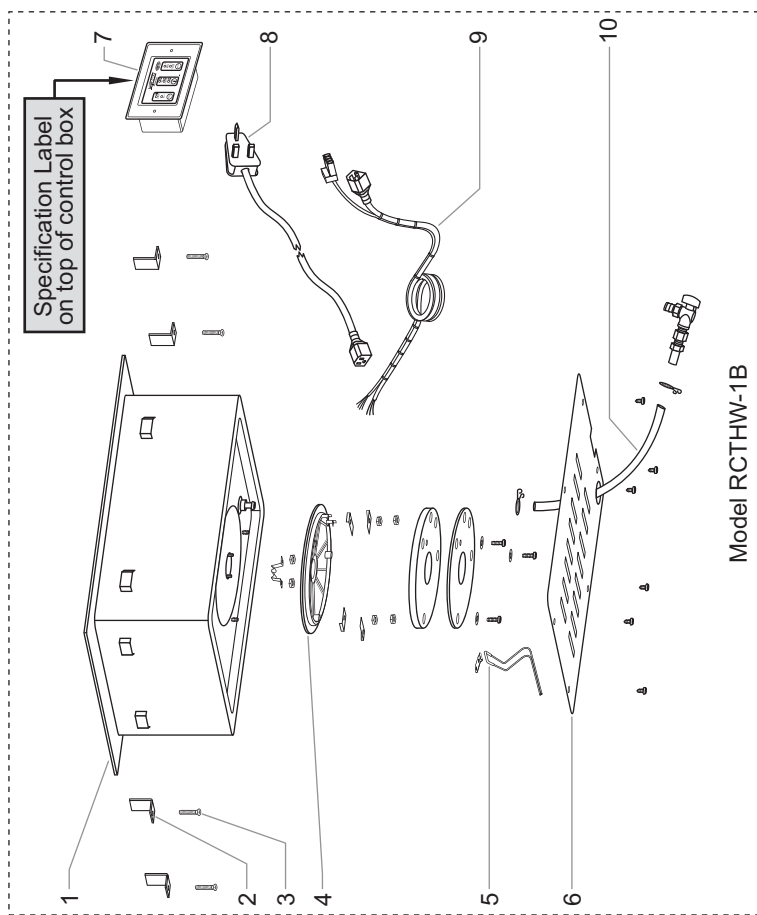
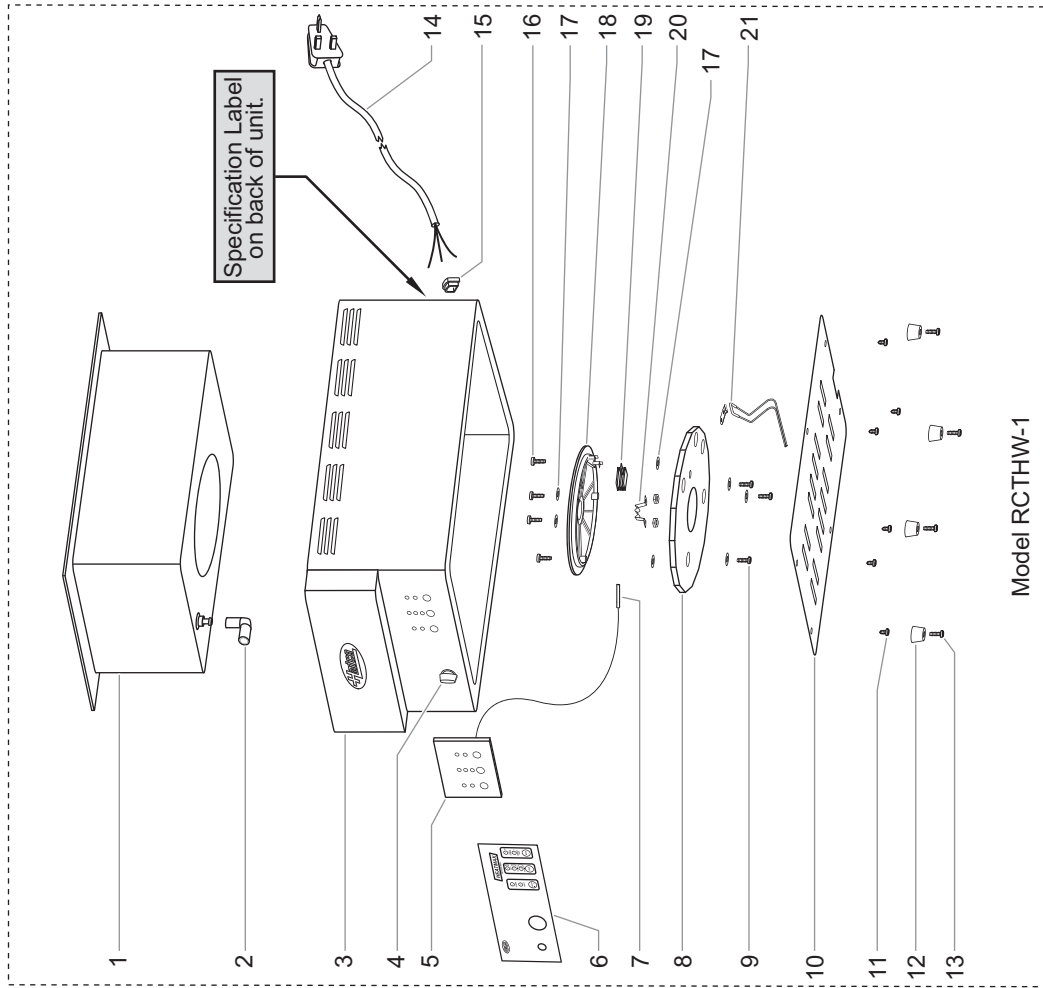
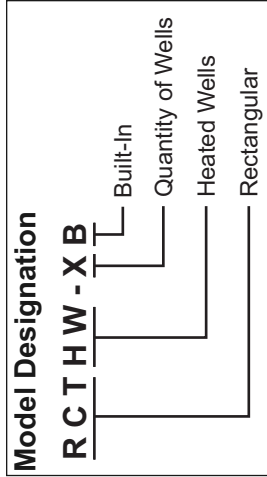
### CAUTION

Use of replacement parts other than those supplied by Hatco Corporation may result in damage to the unit or injury to personnel and will void all warranties.

† Control Board (P/N 02.01.238.00) has three DIP switches. For RHW Series units, use the following settings: 1 = OFF, 2 = OFF, 3 = OFF.

# HATCO HEAT-MAX® HEATED WELLS

RCTHW -1 and RCTHW-1B Models (Date Code 1102 and older)



**IMPORTANT NOTE!**

This section is for RCTHW-1 and RCTHW-1B Model heated wells built before a manufacturing and part number change. Use this section for RCTHW-1 Series heated wells with a manufacturing date code of 1102 and older.

*NOTE: The last four digits in a ten digit numerical serial number are the manufacturing date code.*

*Example: Serial number 9625060951 has a date code of "0951" which indicates the following: 0951*

Year 2009 —  
Week Fifty-One —

**PARTS LIST FOR RCTHW-1 MODELS — 220 V (DATE CODE 1102 AND OLDER)**

Item	Description	Part No.	Qty.
1	Water Pan	X04.19.1121.00	1
2	Drain Elbow	X03.02.044.00	1
3	Enclosure	X04.19.1124.00	1
4	Drain Valve	X03.02.043.00	1
5	Control Board	X02.01.238.00	1
6	Decal, Control	X07.03.512.00	1
7	Temperature Sensor	X02.01.241.00	1
8	Insulated Panel Cover	X04.19.1123.00	1
9	Screw, Heating Element, Bottom	X05.04.523.00	3
10	Bottom Cover	X04.19.1125.00	1
11	Screw, Bottom Cover	X05.04.524.00	6
12	Supporting Leg	X05.30.094.00	4

Item	Description	Part No.	Qty.
13	Screw, Leg	X05.04.493.00	4
14	Power Cord w/ Socket	X02.18.217.00	1
15	Cord Grip	R02.20.259.00	1
16	Screw, Heating Element, Top	X05.04.522.00	4
17	Washer, Heating Element	X05.11.050.00	4
18	Heating Element, 2000 W	X02.05.608.00	1
19	High Limit Safety Switch	X02.16.133.00	1
20	Bracket, Sensor	X04.19.1122.00	1
21	High Limit Sensor and Harness Assembly	02.18.286.00	1
	Wiring Diagram	10-01-363	

**PARTS LIST FOR RCTHW-1B MODELS — 220 V (DATE CODE 1102 AND OLDER)**

Item	Description	Part No.	Qty.
1	Enclosure	X04.19.1090.00	1
2	Mounting Bracket	X03.19.1088.00	4
3	Screw, Mounting Bracket	X05.04.518.00	4
4	Heating Element, 1250 W	X02.05.595.00	1
5	High Limit Sensor and Harness Assembly	02.18.286.00	1
6	Bottom Cover	X04.19.1092.00	1

Item	Description	Part No.	Qty.
7	Control Board	X02.01.238.00	1
8	Power Cord Assembly	X02.18.187.00	1
9	Control Cord Assembly	X02.18.170.00	1
10	Drain Hose	X03.40.019.00	1
	Wiring Diagram	10-01-364	



**Use of replacement parts other than those supplied by Hatco Corporation may result in damage to the unit or injury to personnel and will void all warranties.**

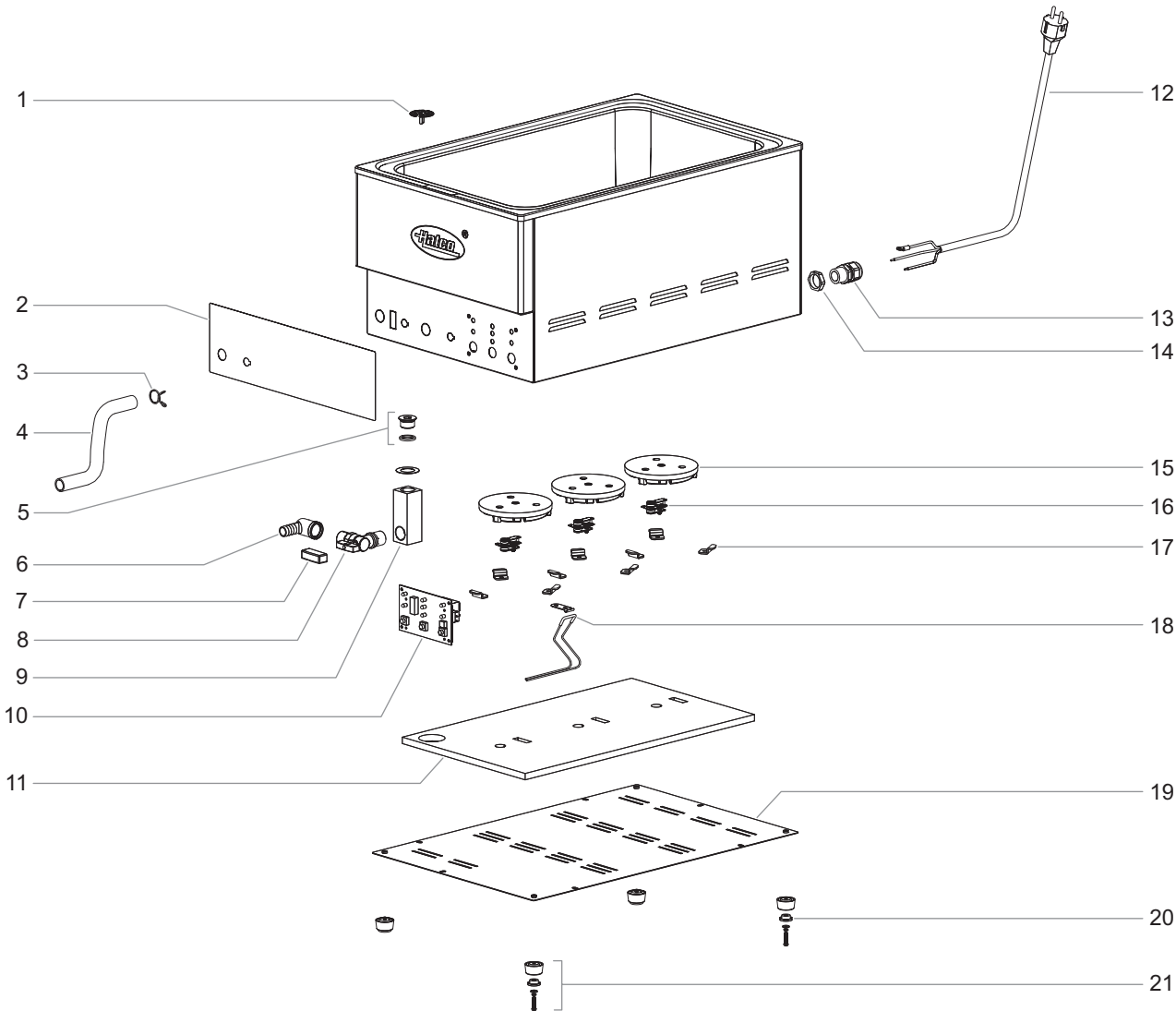
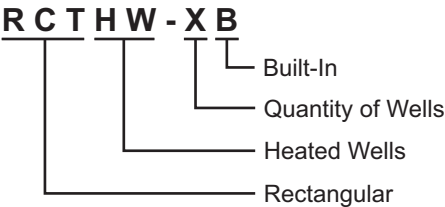
# HATCO HEAT-MAX® HEATED WELLS

## RCTHW-1 Model (Date Code 1103 and newer)

### IMPORTANT NOTE!

This section is for RCTHW-1 Model heated wells built after a manufacturing and part number change. Use this section for RCTHW-1 Model heated wells with a manufacturing date code of 1103 and newer.

### Model Designation





## PARTS LIST FOR RCTHW-1 MODELS — 230 V (DATE CODE 1103 AND NEWER)

Item	Description	Part No.	Qty.
1	Strainer	04.42.468.00	1
2	Label, Control Plate	07.01.352.00	1
3	Spring Clamp	05.04.685.00	1
4	Silicone Tube *	03.40.133.00	1m
5	Drain Fitting and Washer	R03.40.130.00	1
6	Elbow Barb	03.40.138.00	2
7	Handle Cover	05.30.169.00	1
8	Faucet	03.40.127.00	1
9	Water Fitting, Large	03.40.129.00	1
10	Control Board †	02.01.238.00	1
11	Insulation	R00.05.0034.00	1
12	Power Cord		
	AS-3112	02.18.213.00	1
	CEE 7/7 Schuko	02.18.217.00	1
	BS-1363	02.18.218.00	1

Item	Description	Part No.	Qty.
13	Cord Grip	R02.20.259.00	1
14	Cord Grip Nut	02.20.259A.00	1
15	Heating Element	R02.05.736.00	3
16	High-Limit Thermostat	02.16.160.00	3
17	Bracket, Element	04.42.474.00	9
18	High Limit Sensor and Harness Assembly	02.18.286.00	1
19	Cover, Bottom	04.42.415.00	1
20	Foot Cushion	05.30.149.00	4
21	Foot (includes Item 20)	R05.30.148.00	4
	Wiring Diagram	10-01-971	

\* Sold per meter.

† Control Board (P/N 02.01.238.00) has three DIP switches. For RCTHW Series units, use the following settings:  
1 = ON, 2 = ON, 3 = ON.

NOTE: The last four digits in a ten digit numerical serial number are the manufacturing date code.

Example: Serial number 9625060951 has a date code of "0951" which indicates the following: 0951

Week Fifty-One  
Year 2009

### CAUTION

Use of replacement parts other than those supplied by Hatco Corporation may result in damage to the unit or injury to personnel and will void all warranties.

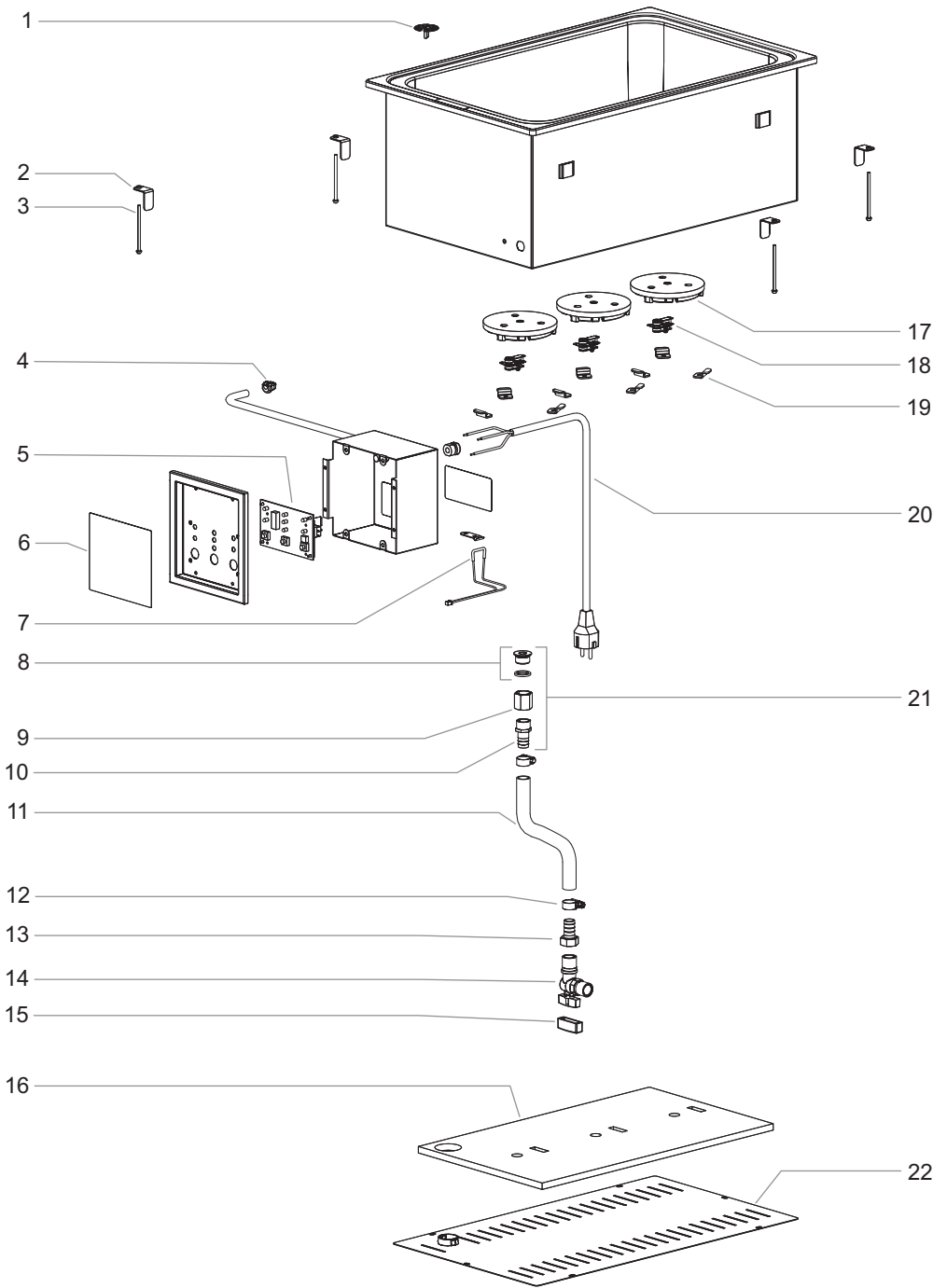
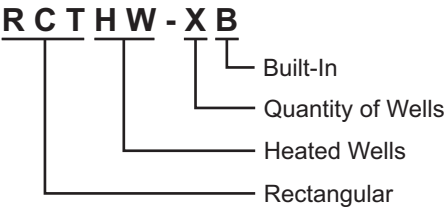
# HATCO HEAT-MAX® HEATED WELLS

## RCTHW-1B Model (Date Code 1103 and newer)

### IMPORTANT NOTE!

This section is for RCTHW-1B Model heated wells built after a manufacturing and part number change. Use this section for RCTHW-1B Model heated wells with a manufacturing date code of 1103 and newer.

### Model Designation



## PARTS LIST FOR RCTHW-1B MODELS — 230 V (DATE CODE 1103 AND NEWER)

Item	Description	Part No.	Qty.
1	Strainer	04.42.468.00	1
2	Mounting Bracket	04.42.334.00	4
3	Mounting Bracket Screw	05.04.636.00	4
4	Cord Grip	02.20.406.00	2
5	Control Board †	02.01.238.00	1
6	Label, Control Plate	07.01.333.00	1
7	High Limit Sensor and Harness Assembly	02.18.393.00	1
8	Drain Fitting and Washer	R03.40.130.00	1
9	Coupling, 1/2"	03.40.142.00	1
10	Fitting, Male, Barb	03.40.136.00	1
11	Silicone Tube *	03.40.133.00	1m
12	Hose Clamp	05.04.697.00	1
13	Fitting, Female, Barb	03.40.139.00	1

Item	Description	Part No.	Qty.
14	Faucet	03.40.127.00	1
15	Handle Cover	05.30.169.00	1
16	Insulation	R00.05.0034.00	1
17	Heating Element	R02.05.736.00	3
18	High-Limit Thermostat	02.16.160.00	3
19	Bracket, Element	04.42.474.00	3
20	Power Cord		
	AS-3112	02.18.213.00	1
	CEE 7/7 Schuko	02.18.217.00	1
	BS-1363	02.18.218.00	1
21	Drain Fitting Assembly (includes items 8–10)	R00.03.0008.00	1
22	Cover, Bottom	04.42.461.00	1
	Wiring Diagram	10-01-976	

\* Sold per meter.

† Control Board (P/N 02.01.238.00) has three DIP switches. For RCTHW Series units, use the following settings:  
1 = ON, 2 = ON, 3 = ON.

NOTE: The last four digits in a ten digit numerical serial number are the manufacturing date code.

Example: Serial number 9625060951 has a date code of "0951" which indicates the following: 0951

Week Fifty-One  
Year 2009



**Use of replacement parts other than those supplied by Hatco Corporation may result in damage to the unit or injury to personnel and will void all warranties.**

# HATCO HEAT-MAX® HEATED WELLS

## RCTHW-6 Model

Model Designation

R

C

T

H

W

-

X

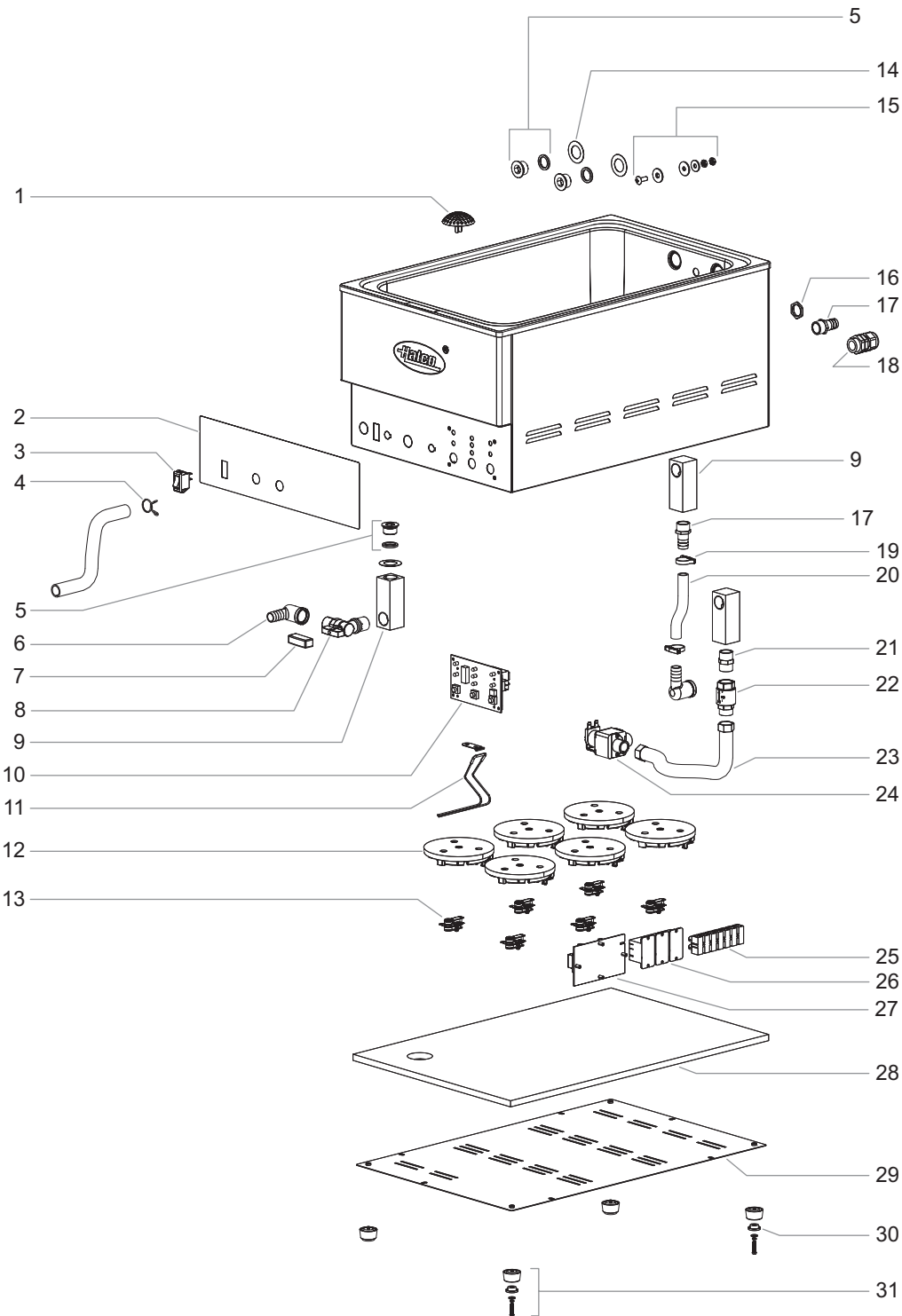
B

Built-In

Quantity of Wells

Heated Wells

Rectangular



## PARTS LIST FOR RCTHW-6 MODELS — 230 V

Item	Description	Part No.	Qty.
1	Strainer	04.42.502.00	1
2	Label, Control Plate	07.01.349.00	1
3	Power Switch	02.19.216.00	1
4	Spring Clamp	05.04.685.00	1
5	Water Fitting and Washer	R03.40.145.00	3
6	Elbow Barb	03.40.138.00	2
7	Handle Cover	05.30.169.00	1
8	Faucet	03.40.127.00	1
9	Water Fitting, Large	03.40.129.00	2
10	Control Board †	02.01.238.00	1
11	High Limit Sensor and Harness Assembly	02.18.286.00	1
12	Heating Element	R02.05.736.00	6
13	High-Limit Thermostat	02.16.160.00	6
14	Washer, Teflon, Water Probe	02.01.361.00	3
15	Sensor Screw Assembly	R05.04.750.00	1
16	Nut, Brass	05.04.731.00	1
17	Fitting, Barbed	03.40.136.00	1
18	Cord Grip	R02.20.259.00	1

Item	Description	Part No.	Qty.
19	Hose Clamp	05.04.738.00	2
20	Silicone Tube *	03.40.133.00	1m
21	Nipple, Male	03.01.017.00	1
22	Valve, Back-flow Preventer	03.02.083.00	1
23	Flexible Tube	03.40.150.00	1
24	Valve, Solenoid	03.02.080.00	1
25	Terminal Block	02.15.061.00	1
26	Relay, 220V	02.01.341.00	3
27	Low Water Cutoff Board	R02.01.210.00	1
28	Insulation	R00.05.0034.00	1
29	Cover, Bottom	04.42.415.00	1
30	Foot Cushion	05.30.149.00	4
31	Foot (includes Item 30 Cushion)	R05.30.148.00	4
	Wiring Diagram	10-01-958	

\* Sold per meter.

† Control Board (P/N 02.01.238.00) has three DIP switches. For RCTHW Series units, use the following settings:  
1 = ON, 2 = ON, 3 = ON.

**NOTE:** The last four digits in a ten digit numerical serial number are the manufacturing date code.

Example: Serial number 9625060951 has a date code of "0951" which indicates the following: 0951

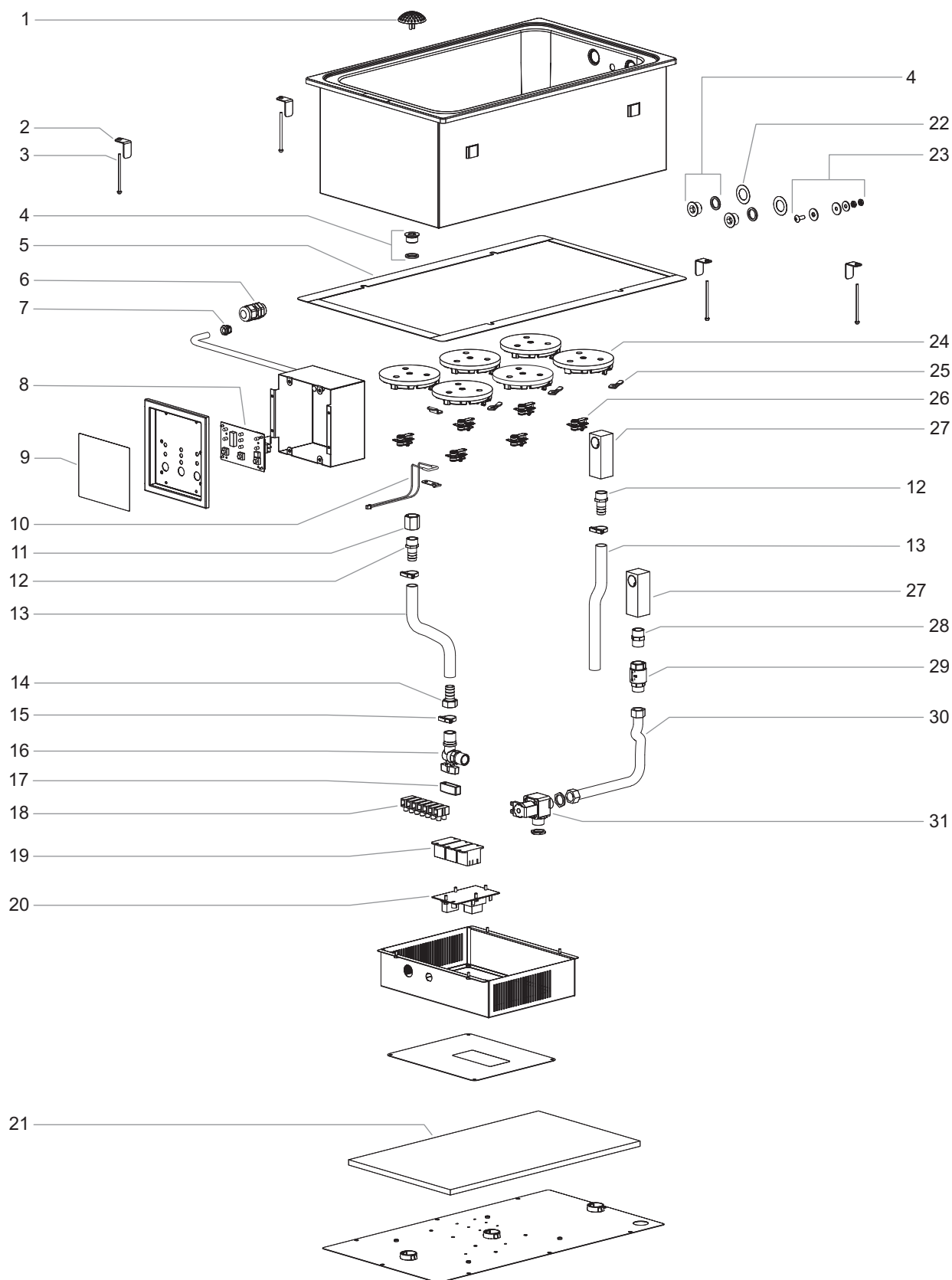
Week Fifty-One  
Year 2009



**Use of replacement parts other than those supplied by Hatco Corporation may result in damage to the unit or injury to personnel and will void all warranties.**

# HATCO HEAT-MAX® HEATED WELLS

## RCTHW-6B Model



## PARTS LIST FOR RCTHW-6B MODELS — 230 V

Item	Description	Part No.	Qty.
1	Strainer	04.42.502.00	1
2	Installation Plate	R04.42.334.00	4
3	Screw	05.04.636.00	4
4	Water Fitting and Washer	R03.40.145.00	3
5	Mounting Plate	04.42.442.00	1
6	Cord Grip, Straight	R02.20.259.00	1
7	Cord Grip	02.20.372.00	2
8	Control Board †	02.01.238.00	1
9	Label, Control Panel	07.01.333.00	1
10	High Limit Sensor and Harness Assembly	02.18.393.00	1
11	Coupling, Female	03.40.142.00	1
12	Fitting, Male	03.40.136.00	1
13	Silicone Tube *	03.40.133.00	1m
14	Fitting, Female	03.40.139.00	1
15	Hose Clamp	05.04.738.00	2
16	Faucet	03.40.127.00	1
17	Handle Cover	05.30.169.00	1

Item	Description	Part No.	Qty.
18	Terminal Block	02.15.061.00	1
19	Relay, 220V	02.01.341.00	3
20	Low Water Cutoff	R02.01.210.00	1
21	Insulation	R00.05.0034.00	1
22	Washer, Teflon, Water Probe	02.01.361.00	3
23	Sensor Screw Assembly	R05.04.750.00	1
24	Heating Element	R02.05.736.00	6
25	Bracket, Element	04.42.474.00	18
26	High-Limit Thermostat	02.16.160.00	6
27	Water Fitting, Large	03.40.129.00	2
28	Nipple, Male	03.01.017.00	1
29	Valve, Back-flow Preventer	03.02.083.00	1
30	Flexible Tube	03.40.150.00	1
31	Valve, Solenoid	03.02.080.00	1
	Wiring Diagram	10-01-1017	

\* Sold per meter.

† Control Board (P/N 02.01.238.00) has three DIP switches. For RCTHW Series units, use the following settings:  
1 = ON, 2 = ON, 3 = ON.

**NOTE:** The last four digits in a ten digit numerical serial number are the manufacturing date code.

Example: Serial number 9625060951 has a date code of "0951" which indicates the following: 0951

Week Fifty-One  
Year 2009



**Use of replacement parts other than those supplied by Hatco Corporation may result in damage to the unit or injury to personnel and will void all warranties.**

## **HATCO AUTHORIZED PARTS DISTRIBUTORS**

### **United Kingdom**

Marren Group  
Northants +44(0)1933 666233



HATCO CORPORATION  
P.O. Box 340500  
Milwaukee, WI 53234-0500 U.S.A.  
Telephone (414) 671-6350  
International Fax (414) 671-3976  
partsandservice@hatcocorp.com  
www.hatcocorp.com



HATCO CORPORATION  
ASIA HEADQUARTERS  
Unit 101, Premier Center, 20 Cheung Shun Street  
Cheung Sha Wan, Kowloon, H.K.  
Telephone (852) 2991-4121  
Fax (852) 2991-4181  
hongkong@hatcocorp.com