

SEE TABLE FOR EXPORT CORD OPTIONS.

FOR CE UNITS:
FOR THE EQUIPOTENTIAL GROUND, INSTALL 05.04.136.00 IN HOLE NEXT TO CORD.
SECURE WITH THE FIRST KEPS NUT 05.04.023.00. LOCKTITE THE FIRST NUT. INSTALL THE NEXT 2 KEPS NUTS.
ATTACH LABEL 07.03.263.00 ON OUTSIDE OF BASE NEXT TO EQUIPOTENTIAL GROUND.

FOR DOMESTIC UNITS THIS GROUNDING CONFIGURATION WILL NOT BE USED.
INSTALL SCREW 05.04.194.00 IN HOLE USED FOR EQUIPOTENTIAL GROUND.

STEP 1
FDWDE-1,IX,ECONOLINE,EXPORT,ASSEMBLY DETAILS

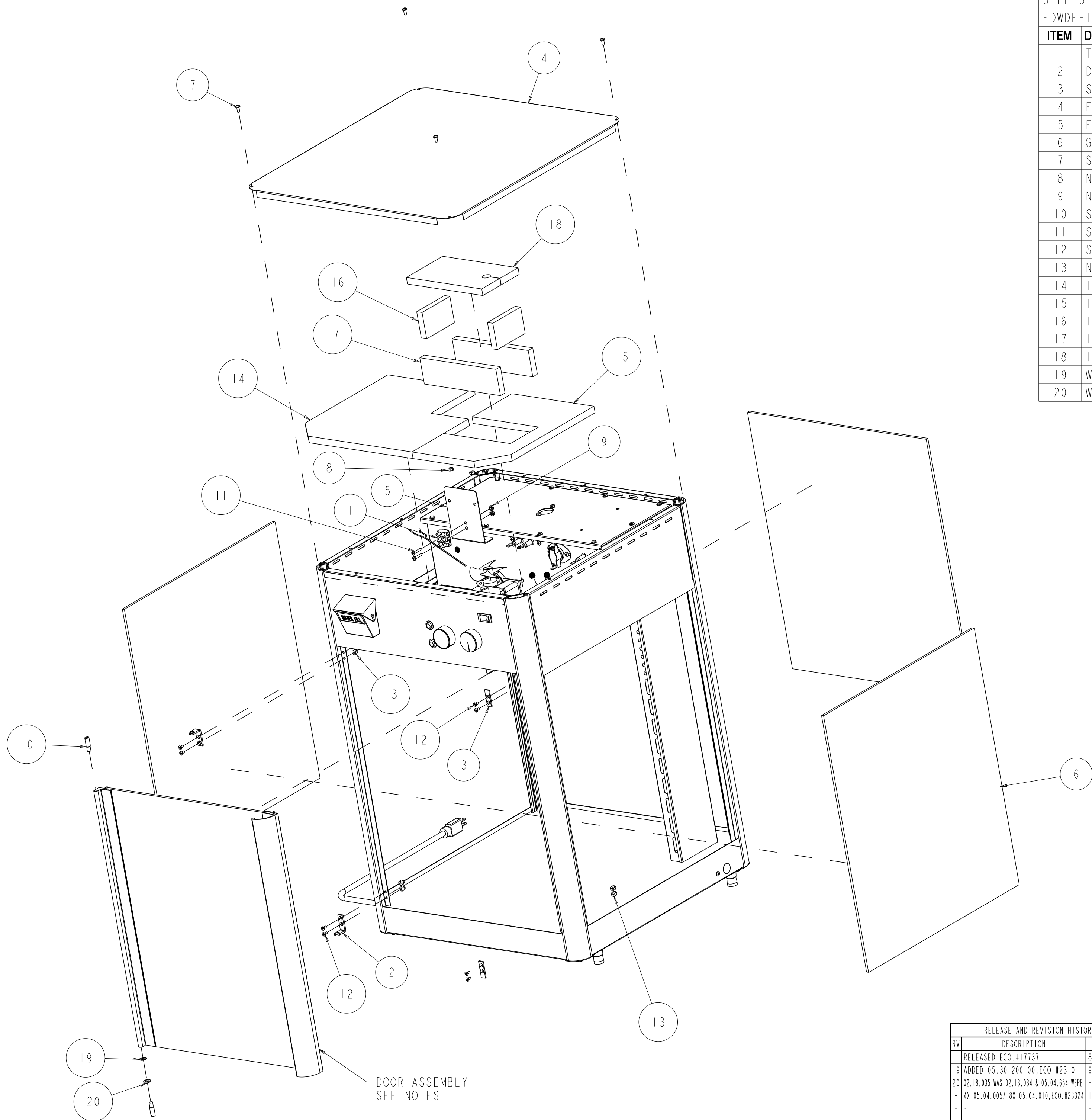
ITEM	DESCRIPTION	PART NUMBER	QTY
1	CORD 5-15/ST 15A 90C 132"	02.18.035.00	1
2	SNAP BUSHING 5/8"	02.20.213.00	1
3	PLUG,DOME .625	02.20.219.00	3
4	CORD GRIP,STRT,.325-.360 MAX.	02.20.276.00	1
5	BUMPER,RUBBER, .375 DIAMETER	04.17.688.00	6
6	CORNER POST REAR,FDWD	04.24.170.00	2
7	LOWER CORNER INSERT,FDWD	04.24.171D.00	4
8	FLOOR ASSEMBLY,FDWD	04.24.176.00	1
9	CORNER INSERT,FDWD,19.875"	04.24.181.00	4
10	BASE,WELDMENT,FDWD,UNFINISHED	04.24.202.00	1
11	CORNER POST LEFT FRONT,FDWD	04.24.231.00	1
12	CORNER POST RIGHT FRONT,FDWD	04.24.232.00	1
13	NUT,PLT,8-32 KEPS NUT	05.04.023.00	3
14	SPC PLT 3/8-16X3/4 .480D SHLDR	05.04.087.00	4
15	SC PLT 8-32X3/4 PH PN TCS TYPE T	05.04.136.00	1
16	SC PLT 8-32X3/8 PH PN 23 BL ZC	05.04.194.00	2
17	SC SS 1/4-20 X 1/2 HEX	05.04.201.00	4
18	NUT,S.S.,8-32 KEPS NUT	05.04.472.00	8
19	SC PLT 8-32X3/8 PH PN ZC	05.04.654.00	12
20	LEG MOLDED TIP RUBBER FOOT	05.06.038.00	4
21	PLUG BLACK NYLON .63 X 55 DD	05.06.068.00	1
22	LEG .394 H X Ø.709 BLK RUBBER FOOT	05.30.200.00	4

PART NUMBER	CORD TYPE	AMP	PLUG TYPE	LENGTH
02.18.109.00	H05RR-F-3G-1,70°C.,1.0mm	10.0	SHUKO CEE 7/7 PLUG	11'
02.18.120.00	H07RN-F-3G-1,70°C.,1.5mm	13.0	BRITISH, BS1363	11'
02.18.035.00	HSJO,16/3,90°C.,125V.	15.0	NEMA 5-15	11'
02.20.071.00	N/A	N/A	AUSTRALIAN, AS3112	N/A

FOR AUSTRALIAN UNITS USE GENERAL CORD 02.18.035.00 - ATTACH PLUG 02.20.071.00

- NOTES:
1) SEE 10-02-614 FOR CONSTRUCTION DRAWING.
2) SEE 10-02-643 FOR CONSTRUCTION DRAWING FOR 2 DOOR UNIT.
3) SEE 10-03-432 FOR ASSEMBLY DRAWING FOR 2 DOOR UNIT.
4) 4" LEG (05.30.007.00) OPTION WILL REQUIRE MOUNTING BRACKETS (04.24.235.00)

RELEASE AND REVISION HISTORY			CK:	
RV	DESCRIPTION	DATE	ENG	RB
1	RELEASED ECO.#17737	8-13-07	JLC	DLE
19	ADDED 05.30.200.00,ECO.#23101	9-17-12	BEW	WEM
20	02.18.035 WAS 02.18.084 & 05.04.654 WERE	-	-	-
-	4X 05.04.005/ 8X 05.04.010,ECO.#23324	12-11-12	BEW	DLE
-	-	-	-	-
-	-	-	-	-
-	-	-	-	-
-	-	-	-	-
Released			HATCO CORP., MILWAUKEE, WI	
UNLESS OTHERWISE SPECIFIED DIMS ARE IN INCHES TOL ON ANGLE ±2.0° 2 PL ±0.02 3 PL ±0.016 HOLE SIZES: +.005/- .002			DESCRIPTION FDWDE-1,IX,ECONOLINE,EXPORT,ASSEMBLY DETAILS	
			PART NUMBER N/A	DRAWING NUMBER 10-03-429
			REV 20	
SCALE:0.230			PROJ: 964100	SHEET 1 OF 3



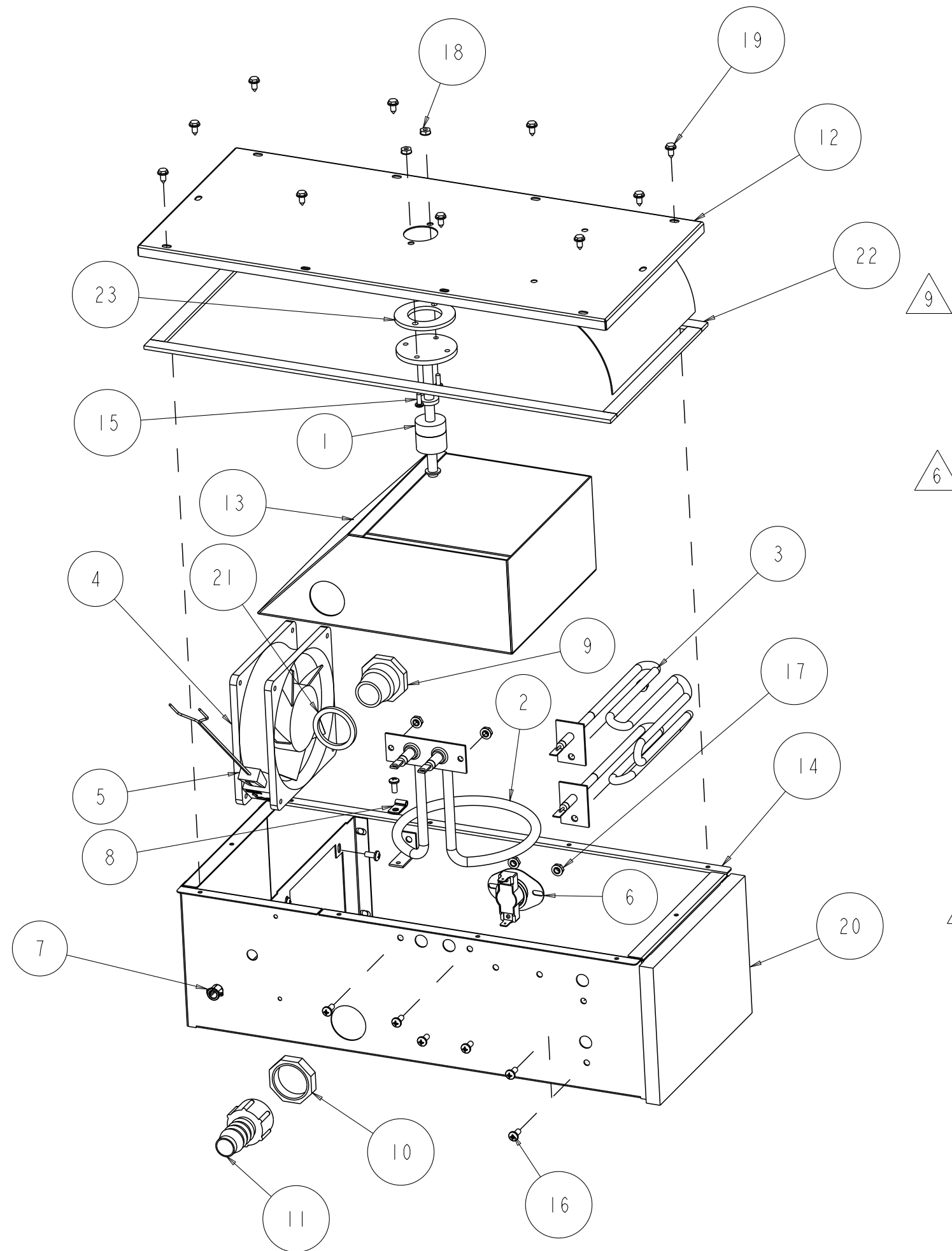
STEP 3 FDWDE-1, IX, ECONOLINE, EXPORT, ASSEMBLY DETAILS			
ITEM	DESCRIPTION	PART NUMBER	QTY
1	TBLOCK (3) POLE 26AMP.,CE	02.15.030.00	1
2	DOOR HINGE,FSD	04.17.674.00	2
3	STRIKER PLATE,FSD	04.17.675.00	2
4	FDWD HOOD,UNPAINTED	04.24.204.00	1
5	FDWD,NOISE FILTER,BRACKET	04.24.272.00	1
6	GLASS,FDWD,SIDE	04.40.254.00	3
7	SC PLT 8-32X3/8 PH PAN ROL BLK	05.04.010BK.00	4
8	NUT,PLT,8-32 KEPS NUT	05.04.023.00	2
9	NUT,PLT,6-32 KEPS NUT	05.04.057.00	2
10	SC SS 1/4-20 HINGE	05.04.146.00	2
11	SC PLT 6-32X3/4 PH PN 23 ZNC	05.04.358.00	2
12	SC SS 6-32X5/16 PH FL MACH	05.04.442.00	8
13	NUT, SS, 6-32 CAP, ACORN	05.04.443.00	8
14	INSULATION RIGID 1/2" X 11 1/2" X 11"	05.05.195.00	1
15	INSULATION RIGID 1/2" X 7 5/8" X 11"	05.05.196.00	1
16	INSULATION RIGID 1/2" X 2" X 3.063"	05.05.197.00	2
17	INSULATION RIGID 1/2" X 2" X 7.063"	05.05.198.00	2
18	INSULATION RIGID 1/2" X 4" X 7"	05.05.201.00	1
19	WASH NYL WHITE 1/2" X .317 X .032	05.11.006.00	1
20	WASH NYL WHITE 1/2" X .317 X .062	05.11.007.00	1

FOR CE UNITS - MOUNT TERMINAL BLOCK USING (2) 05.04.358.00 SCREWS & (2) 05.04.057.00 KEPS NUTS TO MOUNTING BRACKET 04.24.272.00. ATTACH MOUNTING BRACKET TO CEILING SHEET USING CLINCH STUDS & (2) 05.04.023.00 KEPS NUTS. ATTACH LABEL 07.03.257.00 NEXT TO GROUND STUD.
FOR DOMESTIC UNITS - OMIT TERMINAL BLOCK & BRACKET. INSTALL 05.04.023.00 KEPS NUTS TO SECURE CLINCH STUDS IN PLACE.

NOTES:
1) FOR NON HUMIDIFIED CABINET
INSTALL CONTROL PANEL DECAL 07.03.571.00
REMOVE 05.04.324.00, 05.30.050.00, 05.30.051.00 & 07.03.569.00
2) SEE 10-03-391 FOR DOOR ASSEMBLY DETAILS.

RELEASE AND REVISION HISTORY				CK:	
RV	DESCRIPTION	DATE	ENG	RB	
1	RELEASED ECO.#17737	8-13-07	JLC	DLE	UNLESS OTHERWISE SPECIFIED DIMS ARE IN INCHES TOL ON ANGLE ±2.0° 2 PL ±0.02 3 PL ±0.016 HOLE SIZES: +.005/- .002
19	ADDED 05.30.200.00,ECO.#23101	9-17-12	BEW	WEM	
20	02.18.035 WAS 02.18.084 & 05.04.654 WERE - 4X 05.04.005/ 8X 05.04.010,ECO.#23324	12-11-12	BEW	DLE	
-	-	-	-	-	
-	-	-	-	-	THIS PRINT IS NOT TO BE REPRODUCED WITHOUT PERMISSION OF HATCO CORP.
-	-	-	-	-	
-	-	-	-	-	
-	-	-	-	-	
Released				SCALE:0.200	PROJ: 964100

HATCO CORP., MILWAUKEE, WI	
DESCRIPTION FDWDE-1, IX, ECONOLINE, EXPORT, ASSEMBLY DETAILS	
PART NUMBER N/A	DRAWING NUMBER 10-03-429
REV 20	
SHEET 3 OF 3	



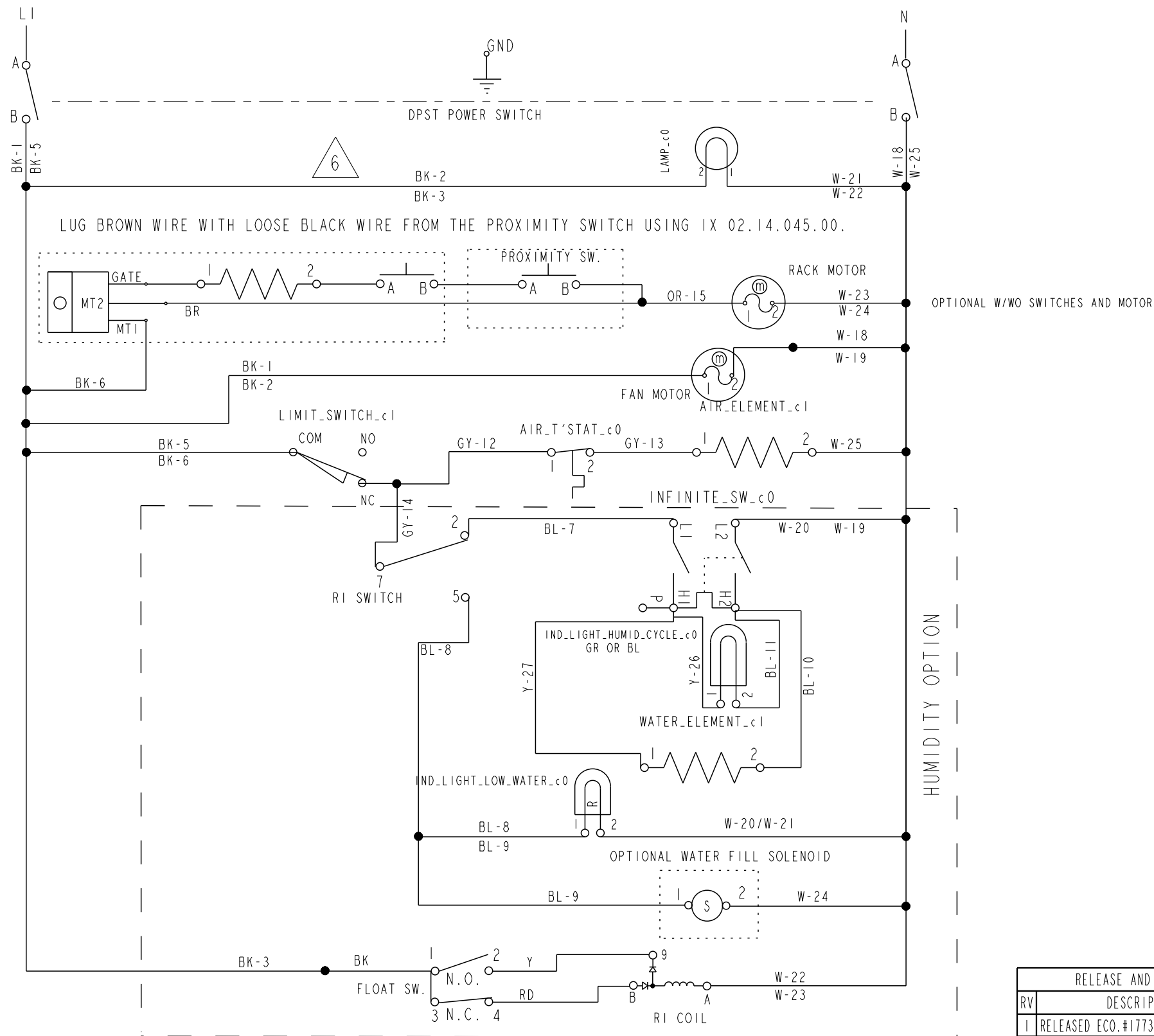
STEP 1
ASSEMBLY DETAILS, AIR/WATER CHAMBER, FDWDE

ITEM	DESCRIPTION	PART NUMBER	QTY
1	DUAL LEVEL FLOAT SWITCH	02.01.029.00	1
2	325W., 120V. WATER ELEMENT	02.05.006.00	1
3	1000W., 120V. AIR ELEMENT	02.05.626.00	1
4	MOTOR, BLOWER, 120V., 60Hz, FDW	02.12.001.00	1
5	BLOWER MOTOR CONNECTOR	02.12.001A.00	1
6	3/4" DISC TYPE BIMETAL SURF. MGT. THERM.	02.16.118.00	1
7	BUSHING, OPEN/CLOSED 3/8"	02.20.232.00	1
8	1/8" P STYLE CABLE CLAMP	02.20.445.00	1
9	3/4" BULKHEAD FITTING	03.40.022.00	1
10	3/4" BULKHEAD JAM NUT	03.40.023.00	1
11	BARB, 3/4", STRAIGHT X 3/4" FPT	03.40.058.00	1
12	AIR CHAMBER COVER, FDWDE	04.24.237.00	1
13	WATER TANK ASM - FDWD LA	04.24.238.00	1
14	AIR CHAMBER ASM - FDWD LATIN AMERICA	04.24.327.00	1
15	SC SS 6-32X3/8 PH PAN MACH	05.04.214.00	2
16	SC SS 8-32X3/8 PH PN MACH	05.04.301.00	9
17	NUT, S.S., 8-32 KEPS NUT	05.04.472.00	6
18	NUT, S.S., 6-32 KEPS NUT	05.04.506.00	2
19	SC SS 8X3/8 HX WSHR SMS, 410	05.04.549.00	10
20	INSULATION RIGID 1/2" X 5" X 7.25"	05.05.200.00	1
21	NITRILE WASHER, 1.500 OD, 1.188 ID X .125	05.06.013.00	1
22	GASKET, SILICONE, .125 X .500	05.06.028.00	4
23	GASKET, FLOAT SWITCH, FSD	05.06.080.00	1

- NOTES:
- 1) FOR NON HUMIDIFIED CABINET:
REMOVE:
02.01.029.00 03.40.058.00
02.05.006.00 04.24.238.00
03.40.023.00 03.40.022.00
05.05.013.00
PLUG ALL HOLES: USE (2) 04.24.090.00 TO COVER FILL HOLE & WATER ELEMENT.
SILICONE IN PLACE.
REPLACE AIR CHAMBER COVER 04.24.237.00 WITH 04.24.191.00.
- 2) 220V. & 240V. VERSIONS USE BLOWER MOTOR 02.12.006.00
- 3) 220V. USE WATER ELEMENT 02.05.016E.00 & AIR ELEMENT 02.05.015E.00
- 4) 240V. USE WATER ELEMENT 02.05.013E.00 & AIR ELEMENT 02.05.012E.00
- 5) 100V. USE WATER ELEMENT 02.05.512E.00 & AIR ELEMENT 02.05.511E.00

RELEASE AND REVISION HISTORY				CK:	
RV	DESCRIPTION	DATE	ENG	RB	
1	RELEASED ECO.# 17737	8-13-07	JLC	DLE	UNLESS OTHERWISE SPECIFIED DIMS ARE IN INCHES TOL ON ANGLE $\pm 2.0^{\circ}$ 2 PL ± 0.02 3 PL ± 0.016 HOLE SIZES: $+.005/- .002$
6	04.24.327.00 WAS 04.24.234.00 & -	-	-	-	
7	UPDATED 04.24.237.00, ECO.#20935	11-3-10	BEW	DLE	
7	QTY. (2) WAS (3), ECO.#21895	7-5-11	BEW	WEM	THIS PRINT IS NOT TO BE REPRODUCED WITHOUT PERMISSION OF HATCO CORP.
8	UPDATED FAN VIEW, ECO.#22915	7-5-12	BEW	WEM	
9	02.20.445.00 WAS 02.20.023.00, ECO.#23271	11-21-12	KFH	WEM	
-	-	-	-	-	Released
-	-	-	-	-	

HATCO CORP., MILWAUKEE, WI	
DESCRIPTION ASSEMBLY DETAILS, AIR/WATER CHAMBER, FDWDE	
PART NUMBER N/A	DRAWING NUMBER 10-03-431
SCALE: 0.250	PROJ: 964100
SHEET 1 OF 1	



WIRES: BK-5, W-25,
GY-12, GY-13,
Y-27, AND BL-10 ARE
14AWG. ALL OTHER
WIRES ARE 18AWG.



RATINGS:
100VAC, 1440W, 14.4 AMPS W/HUMIDITY
100VAC, 1115W, 11.2 AMPS W/O HUMIDITY
120VAC, 1420W, 11.8 AMPS W/HUMIDITY
120VAC, 1095W, 9.1 AMPS W/O HUMIDITY
220VAC, 1470W, 6.7 AMPS W/HUMIDITY
220VAC, 1145W, 5.2 AMPS W/O HUMIDITY

RELEASE AND REVISION HISTORY			CK:	
RV	DESCRIPTION	DATE	ENG	RB
1	RELEASED ECO.#17737	8-13-07	JLC	DLE
6	REVISED PROX.SWITCH WIRING,ECO.#19930	1-8-10	BEW	DLE
7	ADDED 02.18.035.00,ECO.#22221	11-17-11	BEW	WEM
8	02.18.035 WAS 02.18.084,ECO.#23324	12-11-12	BEW	DLE
-	-	-	-	-
-	-	-	-	-
-	-	-	-	-
-	-	-	-	-

UNLESS OTHERWISE SPECIFIED
DIMS ARE IN INCHES
TOL ON ANGLE $\pm 2.0^\circ$
2 PL ± 0.02 3 PL ± 0.016
HOLE SIZES: $+ .005/- .002$

THIS PRINT IS NOT TO
BE REPRODUCED WITHOUT
PERMISSION OF HATCO CORP.

REFERENCE HARNESS 02.18.215.00			
HATCO CORP., MILWAUKEE, WI			
DESCRIPTION FDWDE,(ECONOLINE),WIRING DIAGRAM			
PART NUMBER N/A		DRAWING NUMBER 10-01-629	
REV 8			
Released		SCALE:NA	PROJ: 964101 SHEET 1 OF 2

