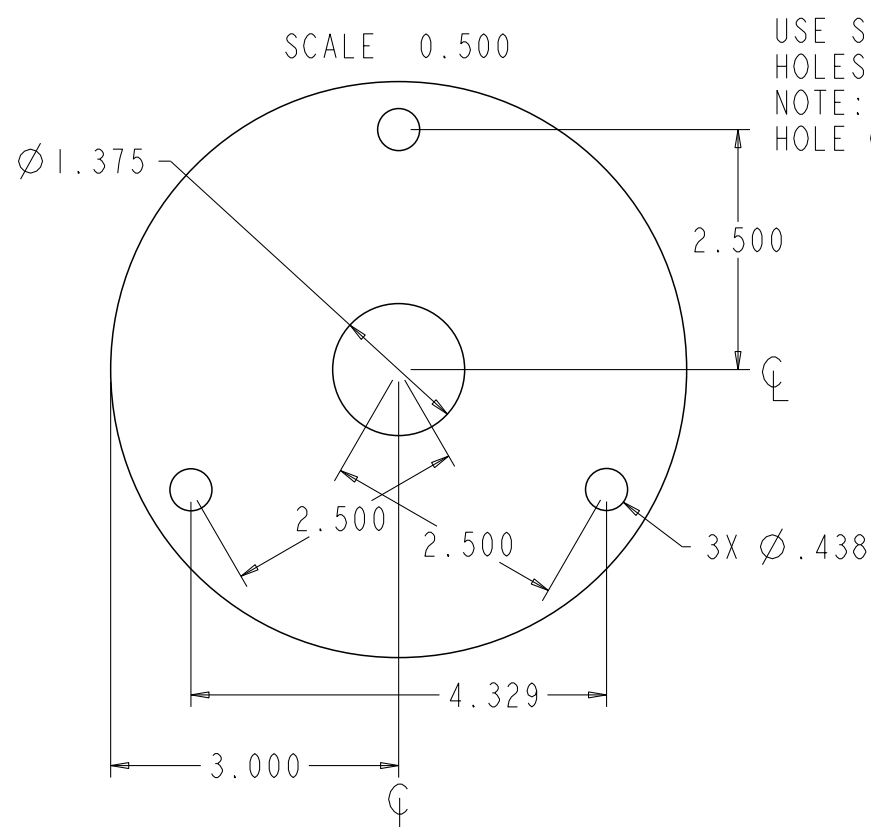


CONTROL ASSEMBLY OPTIONS,
SMALL CONTROL ASSB. STANDARD.
LARGER ASSEMBLY OPTIONAL.
WELLS MFG. ASSEMBLY OPTIONAL.

SEE DRAWING 10-01-481 FOR WIRING DIAGRAM.
SEE DRAWING 10-02-310 FOR CONSTRUCTION DRAWING.

RELEASE AND REVISION HISTORY			CK:							
RV	DESCRIPTION	DATE	ENG	RB						
1	RELEASED ECO.#15642	9-28-05	GHW	JRM	UNLESS OTHERWISE SPECIFIED DIMS ARE IN INCHES TOL ON ANGLE ±2.0° 2 PL ±0.02 3 PL ±0.016 HOLE SIZES: +.005/- .002		HATCO CORP., MILWAUKEE, WI			
11	05.04.549.00 WAS 05.04.133.00, NOTE REVISED,ECO.#17449	-	-	-						
12	UPDATED ELEMENT SCREW DIR.,ECO.#18178	5-3-07	JFO	DLE			DESCRIPTION HWB-11QT,ASSEMBLY			
13	UPDATED ELEMENT SCREW DIR.,ECO.#18527	1-30-08	BEW	JRM						
14	UPDATED PAN ASSM.NOTES,ECO.#18653	5-15-08	BEW	JRM						
15	ADDED WELLS STYLE CONTROL ASSB. & EDIT NOTES,ECO.#19556	7-7-08	GHW	JRM	THIS PRINT IS NOT TO BE REPRODUCED WITHOUT PERMISSION OF HATCO CORP.		PART NUMBER	DRAWING NUMBER	REV	
		4-21-09	GHW	JRM			N/A	10-03-261	15	
Released					SCALE:0.300		PROJ: 945001		SHEET 1 OF 5	



- 1) IF 3' LENGTH OPTION SELECTED,
USE 02.20.329.01
2) IF 6' OPTION SELECTED,
USE 02.20.329.02.

NOTE:
WHEN EXTENDED CONDUIT IS ORDERED
ATTACH THE LENGTH SPECIFIED IN THE BOM
& 2X 02.20.064.00 INSULATORS

5 PCS, 3' LENGTH
10 PCS, 6' LENGTH

ATTACH CONDUIT TO EXTRA
FITTING ON CONTROL BOX

SEE DRAWING
10-3-288 FOR
SELECTION
OPTIONS.

SEE DRAWING
10-03-617 FOR
SELECTION OPTIONS.

SEE DRAWING
10-03-226 FOR
SELECTION OPTIONS.

USE SUPPLIED JIG TO CUT
HOLES IN INSULATION.
NOTE: DO NOT CUT 1-3/8"
HOLE ON NON- DRAIN UNITS

AFTER PLACING BULB THROUGH
CASING, BEND END TO HOLD
IN PLACE, AND SECURE WITH
SCREW AND WASHER.

WRAP/SPIRAL T-STAT CAPILLARY
AROUND FLEXIBLE CONDUIT.
ALLOW ENOUGH ACCESS TO EASILY
SECURE CAPILLARY BULB THROUGH.

BACK VIEW, TO SHOW
CAPILLARY BULB DETAIL
SCALE 1.000

PLACE CAPILLARY BULB
THROUGH THESE HOLES.

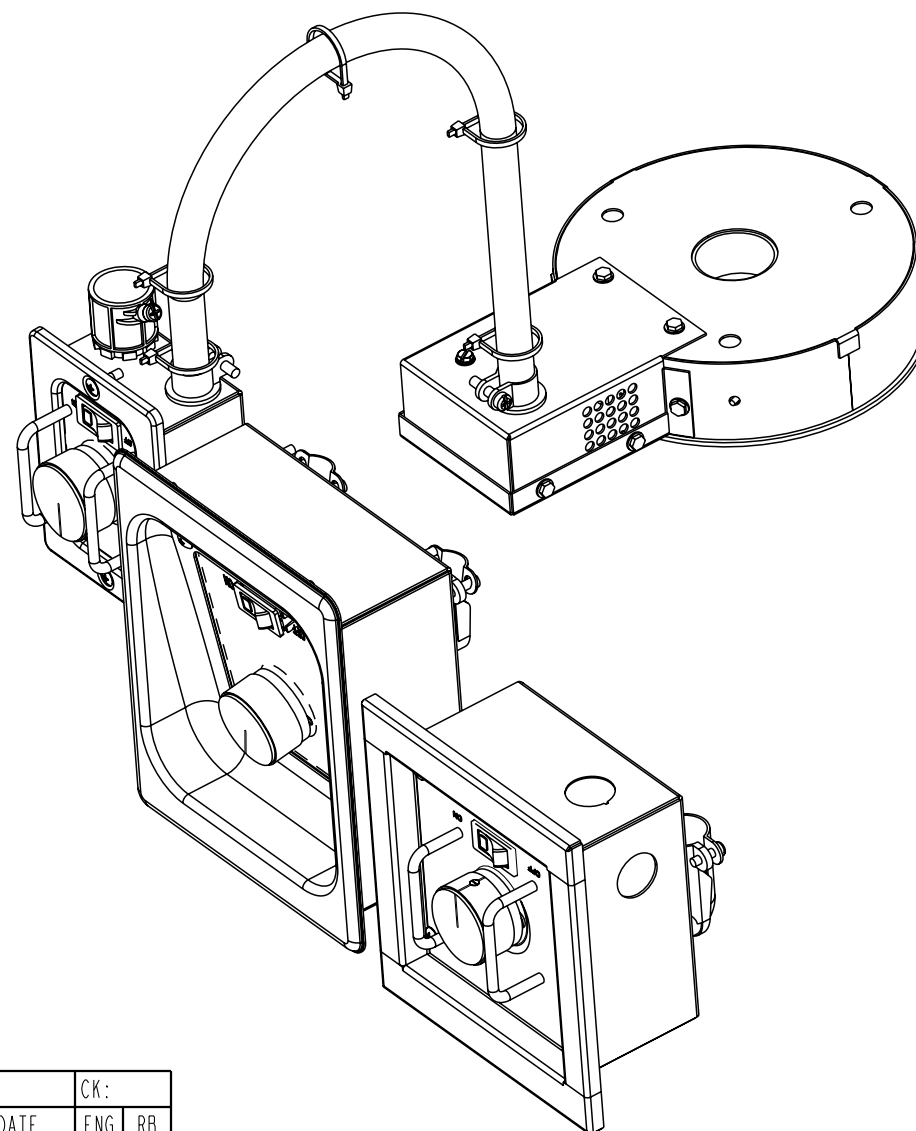
CRITICAL NOTE:
PLACE INSULATION SO THAT IT IS TOUCHING THE BOTTOM ASSEMBLY
THERE MUST BE NO INSULATION BETWEEN THE T-STAT CAPILLARY
BULB (ITEM 1), AND THE ELEMENT SUPPORT (ITEM 7)

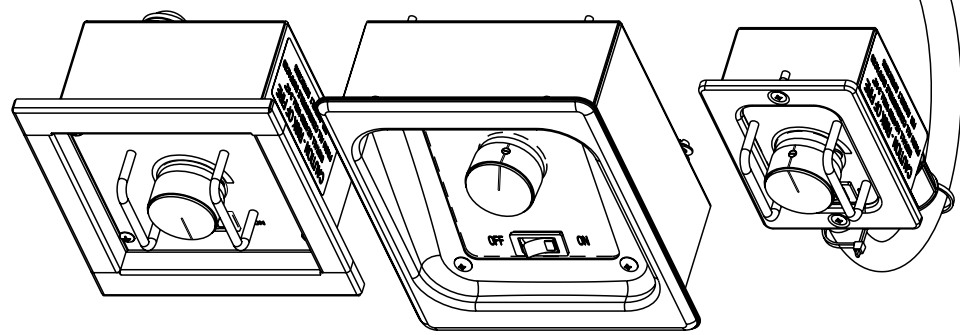
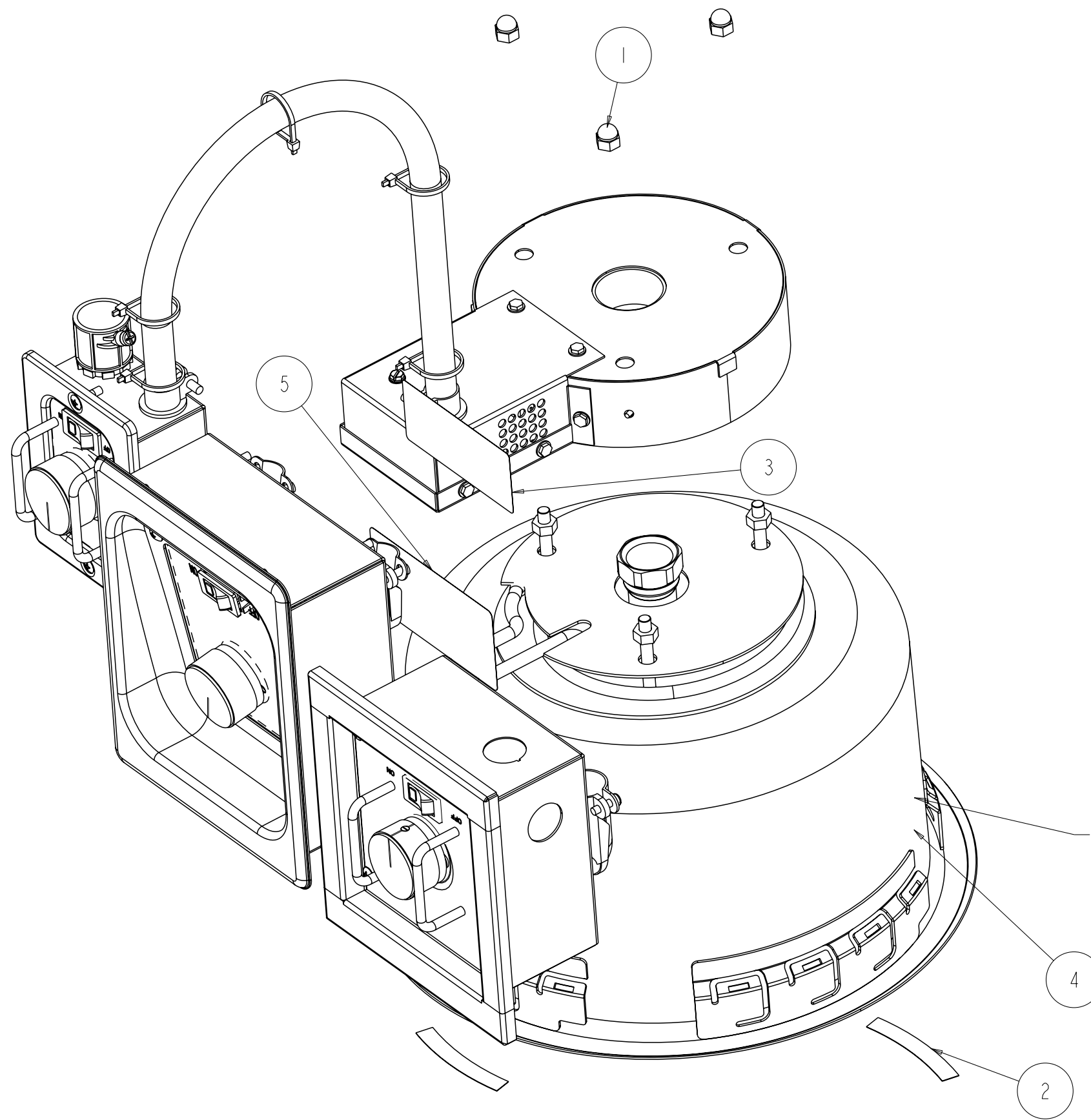
STEP 1 HWB-11QT, ASSEMBLY			
ITEM	DESCRIPTION	PART NUMBER	QTY
1	CAPILLARY BULB	02.16.131.00	1
2	3/8" GREENFIELD STRAIGHT CONNECTOR	02.20.018.00	1
3	CABLE TIE	02.20.077.00	5
4	3/8" INSULINER	02.20.275.00	2
5	T-STAT CAPILLARY BULB BRACKET,HWB	04.42.024.00	1
6	HEAT SINK,HWB ROUND	04.42.032.00	1
7	ROUND ELEMENT SUPPORT	04.42.106.00	1
8	CONNECTION COVER,HWB ROUND	04.42.111.00	1
9	CONNECTION BRACKET,HWB	04.42.112.00	1
10	BOTTOM ASSEMBLY,HWB ROUND	04.42.113.00	1
11	NUT,PLT,8-32 KEPS NUT	05.04.023.00	1
12	NUT,PLT,1/4-20 HEX NUT	05.04.027.00	3
13	SC PLT 10-32X5/16 NI PH PN	05.04.074.00	2
14	SC,PLT,8-32X.313 WASHER HEX SLOTTED	05.04.446.00	1
15	SC SS 8X3/8 HX WSHR SMS	05.04.549.00	9
16	INSUL TRS-10 PLAIN,1 X Ø6.000	05.05.163.00	1
17	WASHER,HELICAL SPRING LOCK NO.10	05.11.017.00	2
18	CONDUIT 3/8",EXTRA FLEX 3 FT.	GENERIC	1
19	CONTROL BOX ASSEMBLY,GENERIC	GENERIC	1
20	HEATING ELEMENT,ROUND,GENERIC	GENERIC	1
21	CONTROL BOX SMALL ASSEMBLY	N/A	1
22	SINGLE CONTROL,WELLS STYLE	N/A	1

TABULATION				
ITEM	DESCRIPTION	PART_NUMBER	VOLTS	WATTS
1	HEATING ELEMENT,ROUND 120V.,500W.	02.08.586.01	120V	500W
2	HEATING ELEMENT,ROUND 120V.,800W.	02.08.586.02	120V	800W
3	HEATING ELEMENT,ROUND 208/220V.,536/600W.	02.08.586.03	208/220V	536/600W
4	HEATING ELEMENT,ROUND 240V.,600W.	02.08.586.04	240V	600W
5	HEATING ELEMENT,ROUND 208/220V.,715/800W.	02.08.586.05	208/220V	715/800W
6	HEATING ELEMENT,ROUND 240V.,800W.	02.08.586.06	240V	800W

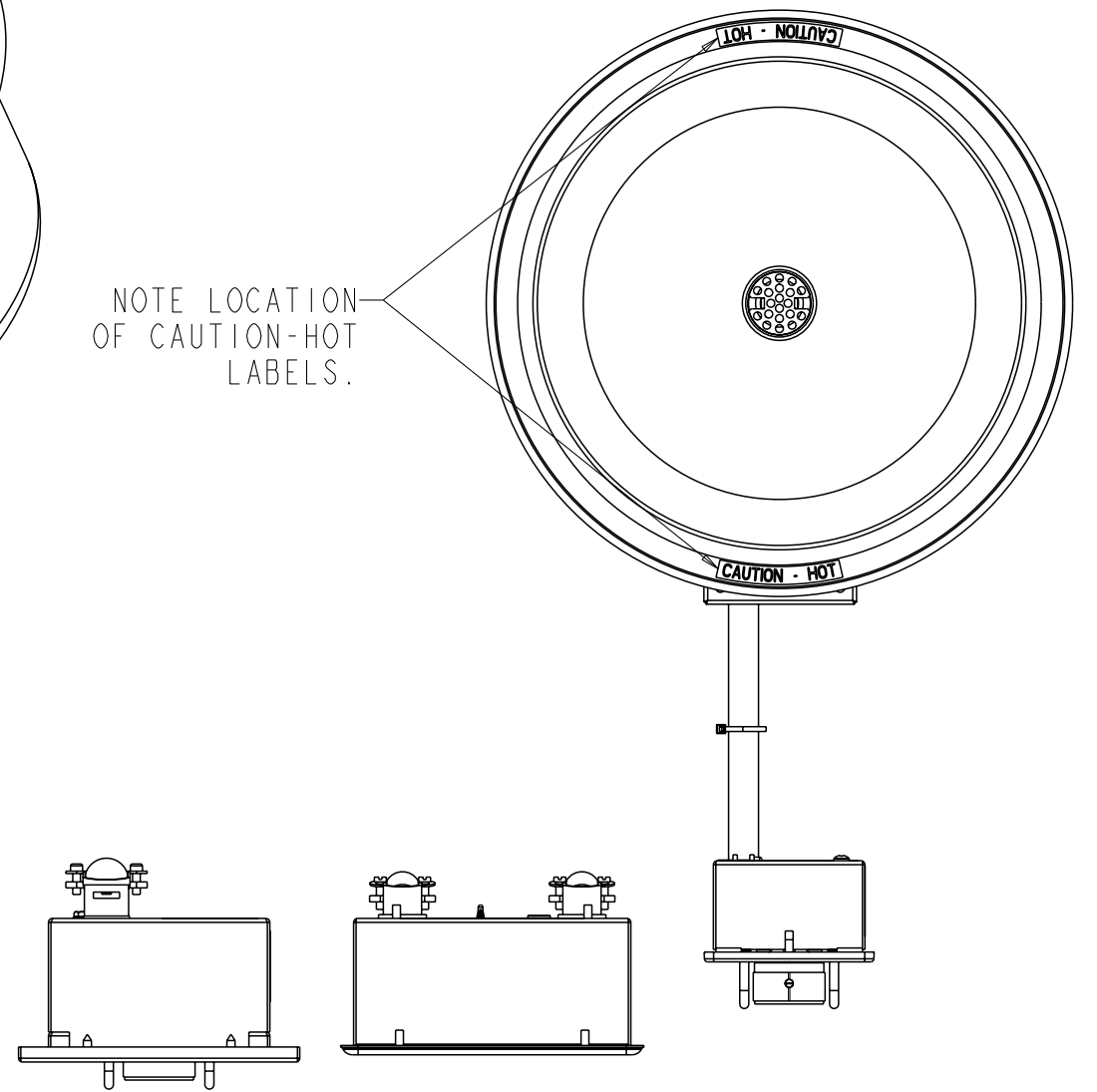
RELEASE AND REVISION HISTORY				CK:	
RV	DESCRIPTION	DATE	ENG	RB	
1	RELEASED ECO.#15642	9-28-05	GHW	JRM	
11	05.04.549.00 WAS 05.04.133.00, NOTE REVISED,ECO.#17449	5-3-07	JFQ	DLE	
12	UPDATED ELEMENT SCREW DIR.,ECO.#18178	1-30-08	BEW	JRM	
13	UPDATED ELEMENT SCREW DIR.,ECO.#18527	5-15-08	BEW	JRM	
14	UPDATED PAN ASSM.NOTES,ECO.#18653	7-7-08	GHW	JRM	
15	ADDED WELLS STYLE CONTROL ASSB. & EDIT NOTES,ECO.#19556	4-21-09	GHW	JRM	

UNLESS OTHERWISE SPECIFIED DIMS ARE IN INCHES TOL ON ANGLE ±2.0° 2 PL ±0.02 3 PL ±0.016 HOLE SIZES: +.005/- .002				HATCO CORP., MILWAUKEE, WI		
THIS PRINT IS NOT TO BE REPRODUCED WITHOUT PERMISSION OF HATCO CORP.				DESCRIPTION HWB-11QT, ASSEMBLY		
Released		PART NUMBER N/A		DRAWING NUMBER 10-03-261		REV 15
SCALE:0.375		PROJ: 945001		SHEET 2 OF 5		



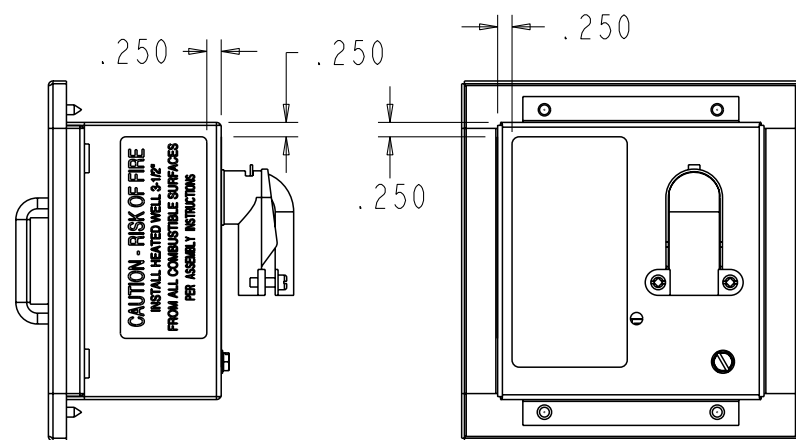


SCALE 0.250

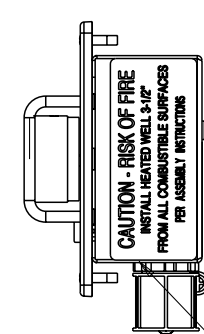


SCALE 0.250

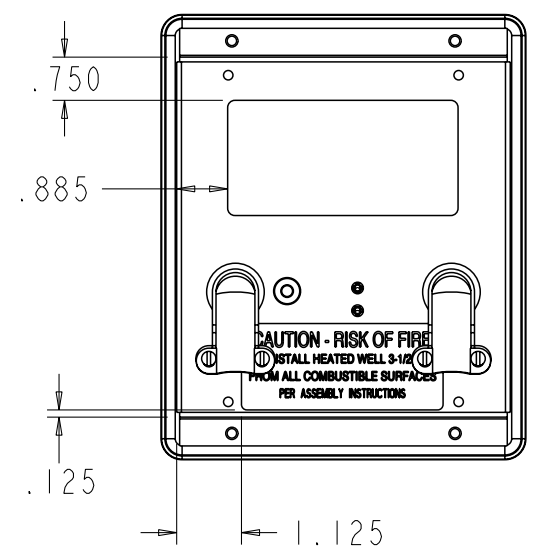
NON-DRAIN UNIT: USE ¹⁴
ASSEMBLY 04.42.008.00
DRAIN UNIT: USE ASSEMBLY
04.42.218.00



¹⁵ WELLS MFG. CONTROL
SIDE AND BACK



NEW LOCATION OF LABEL.
SEE DRAWING 10-03-288 FOR
DETAILS OF SPEC LABEL.

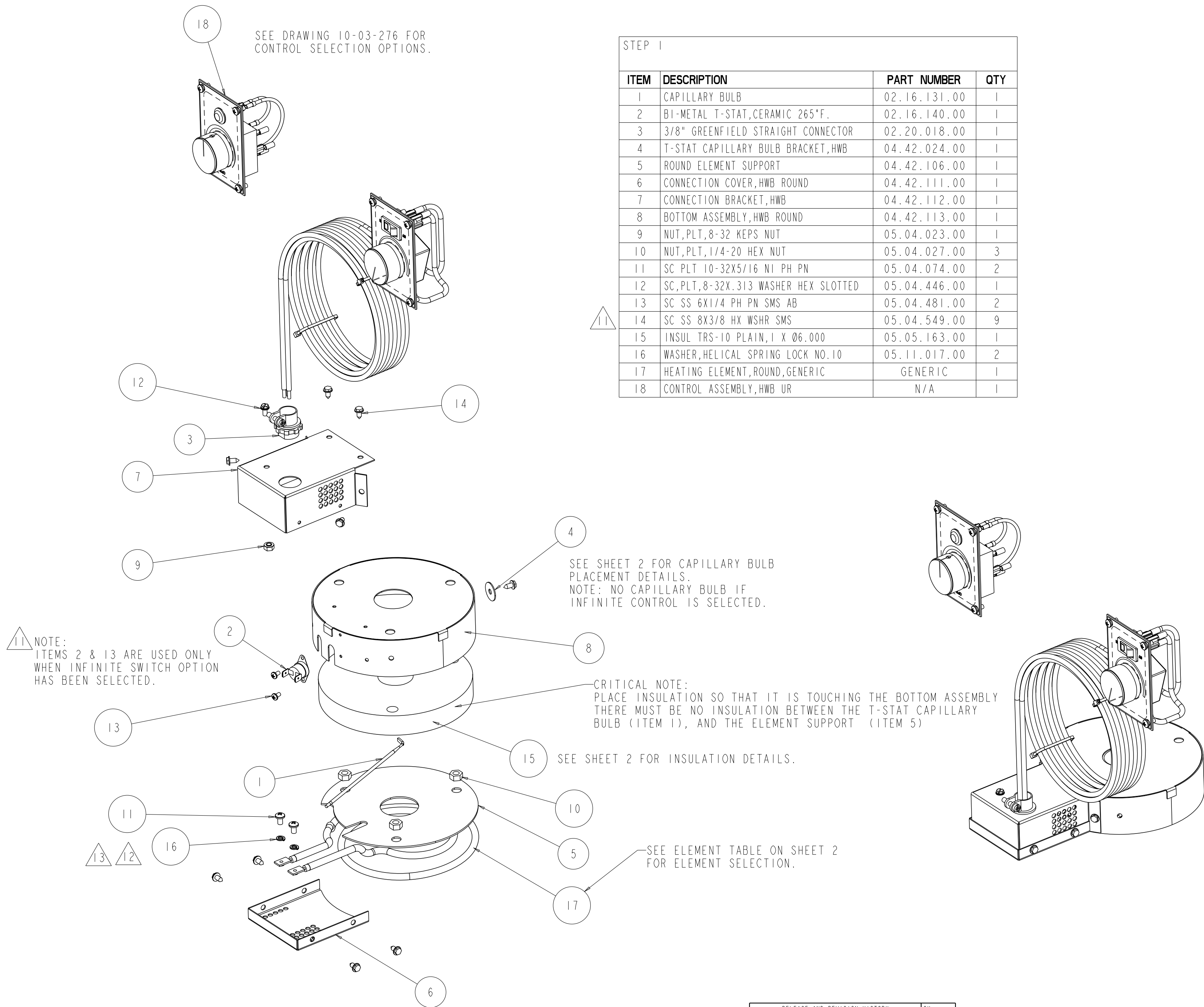


BACK OF OPTIONAL
CONTROL ASSEMBLY

STEP 2 HWB-11QT, ASSEMBLY			
ITEM	DESCRIPTION	PART NUMBER	QTY
1	NUT, S.S., 1/4-20 CAP NUT	05.04.210.00	3
2	LABEL CAUTION HOT BLK/SLVR 5.5R	07.03.503.00	2
3	LABEL DISTANCES TO COMBUSTIBLES	07.03.504.00	1
4	HW-11QT PAN ASSEMBLY	GENERIC	1
5	LABEL, SPEC. PLATE	SS.07.012.00	1

NOTE: ADD 4 FT LENGTH OF 05.06.046.00 TO BE
SHIPPED IN BOX.

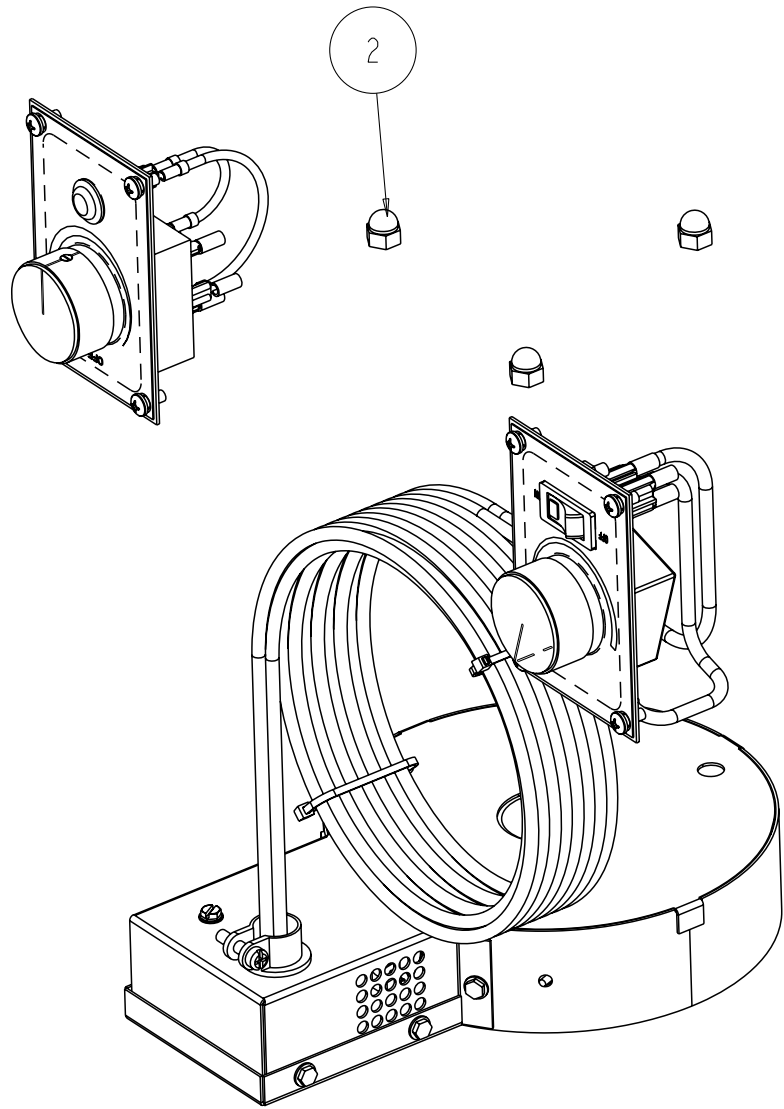
RELEASE AND REVISION HISTORY				CK:	
RV	DESCRIPTION	DATE	ENG	RB	
1	RELEASED ECO.#15642	9-28-05	GHW	JRM	
11	05.04.549.00 WAS 05.04.133.00, NOTE REVISED, ECO.#17449	5-3-07	JFQ	DLE	
12	UPDATED ELEMENT SCREW DIR., ECO.#18178	1-30-08	BEW	JRM	
13	UPDATED ELEMENT SCREW DIR., ECO.#18527	5-15-08	BEW	JRM	
14	UPDATED PAN ASSM. NOTES, ECO.#18653	7-7-08	GHW	JRM	
15	ADDED WELLS STYLE CONTROL ASSB. & EDIT NOTES, ECO.#19556	4-21-09	GHW	JRM	
UNLESS OTHERWISE SPECIFIED DIMS ARE IN INCHES TOL ON ANGLE $\pm 2.0^\circ$ 2 PL ± 0.02 3 PL ± 0.016 HOLE SIZES: $+.005/- .002$				HATCO CORP., MILWAUKEE, WI	
THIS PRINT IS NOT TO BE REPRODUCED WITHOUT PERMISSION OF HATCO CORP.				DESCRIPTION HWB-11QT, ASSEMBLY	
Released				PART NUMBER N/A	DRAWING NUMBER 10-03-261
				SCALE: 0.300	PROJ: 945001
				SHEET 3 OF 5	



STEP 1			
ITEM	DESCRIPTION	PART NUMBER	QTY
1	CAPILLARY BULB	02.16.131.00	1
2	BI-METAL T-STAT,CERAMIC 265°F.	02.16.140.00	1
3	3/8" GREENFIELD STRAIGHT CONNECTOR	02.20.018.00	1
4	T-STAT CAPILLARY BULB BRACKET,HWB	04.42.024.00	1
5	ROUND ELEMENT SUPPORT	04.42.106.00	1
6	CONNECTION COVER,HWB ROUND	04.42.111.00	1
7	CONNECTION BRACKET,HWB	04.42.112.00	1
8	BOTTOM ASSEMBLY,HWB ROUND	04.42.113.00	1
9	NUT,PLT,8-32 KEPS NUT	05.04.023.00	1
10	NUT,PLT,1/4-20 HEX NUT	05.04.027.00	3
11	SC PLT 10-32X5/16 NI PH PN	05.04.074.00	2
12	SC,PLT,8-32X.313 WASHER HEX SLOTTED	05.04.446.00	1
13	SC SS 6X1/4 PH PN SMS AB	05.04.481.00	2
14	SC SS 8X3/8 HX WSHR SMS	05.04.549.00	9
15	INSUL TRS-10 PLAIN,1 X Ø6.000	05.05.163.00	1
16	WASHER,HELICAL SPRING LOCK NO.10	05.11.017.00	2
17	HEATING ELEMENT,ROUND,GENERIC	GENERIC	1
18	CONTROL ASSEMBLY,HWB UR	N/A	1

RELEASE AND REVISION HISTORY			CK:	
RV	DESCRIPTION	DATE	ENG	RB
1	RELEASED ECO.#15642	9-28-05	GHW	JRM
11	05.04.549.00 WAS 05.04.133.00, NOTE REVISED,ECO.#17449	-	-	-
12	UPDATED ELEMENT SCREW DIR.,ECO.#18178	5-3-07	JFQ	DLE
13	UPDATED ELEMENT SCREW DIR.,ECO.#18527	1-30-08	BEW	JRM
14	UPDATED PAN ASSM.NOTES,ECO.#18653	5-15-08	BEW	JRM
15	ADDED WELLS STYLE CONTROL ASSB. & EDIT NOTES,ECO.#19556	7-7-08	GHW	JRM
		4-21-09	GHW	JRM

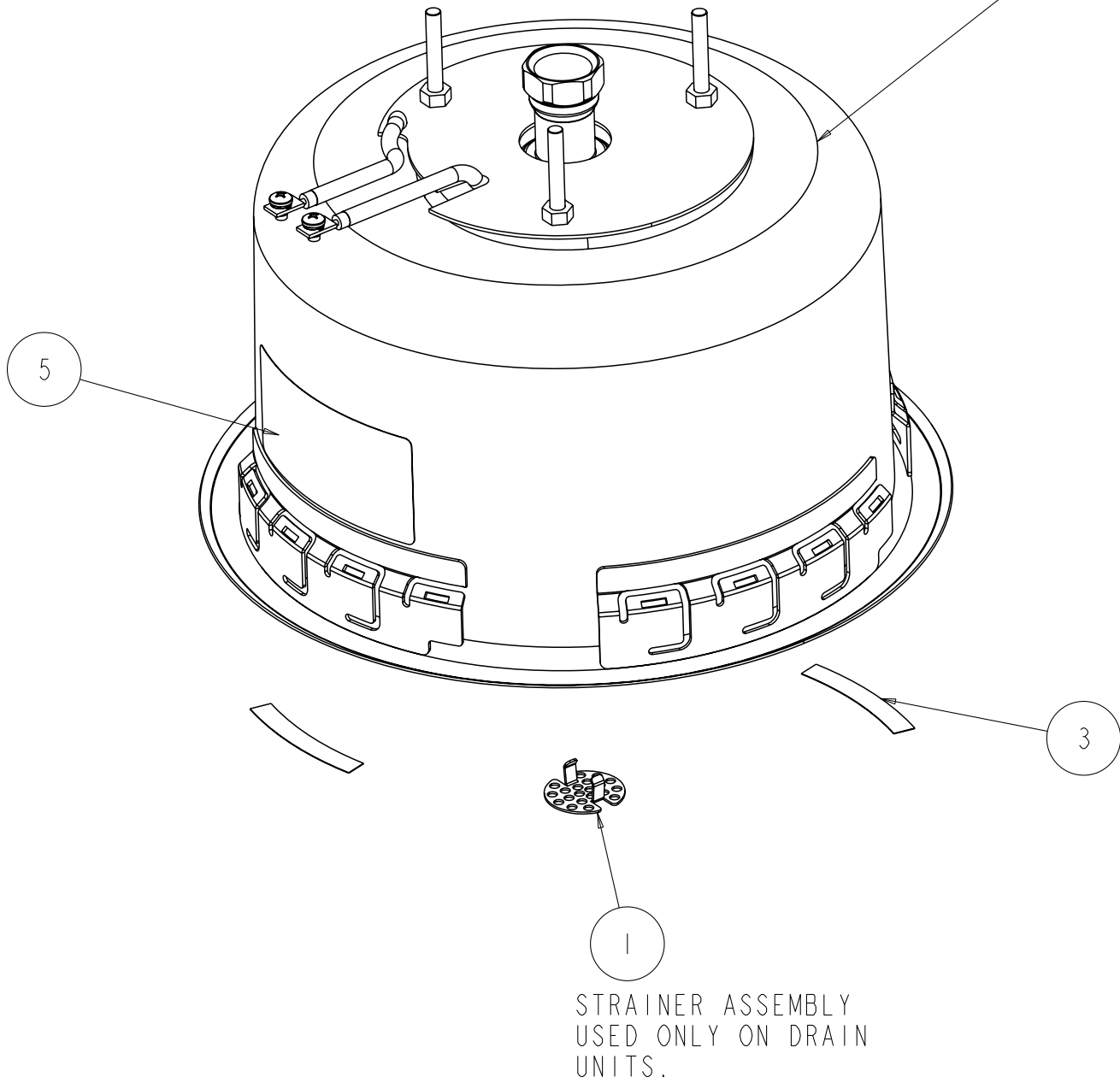
UNLESS OTHERWISE SPECIFIED DIMS ARE IN INCHES TOL ON ANGLE $\pm 2.0^{\circ}$ 2 PL ± 0.02 3 PL ± 0.016 HOLE SIZES: $+.005/- .002$		HATCO CORP., MILWAUKEE, WI	
THIS PRINT IS NOT TO BE REPRODUCED WITHOUT PERMISSION OF HATCO CORP.		DESCRIPTION HWB-11QT, ASSEMBLY	
Released		PART NUMBER N/A	DRAWING NUMBER 10-03-261
SCALE:0.375		PROJ: 945001	REV 15
		SHEET 4 OF 5	



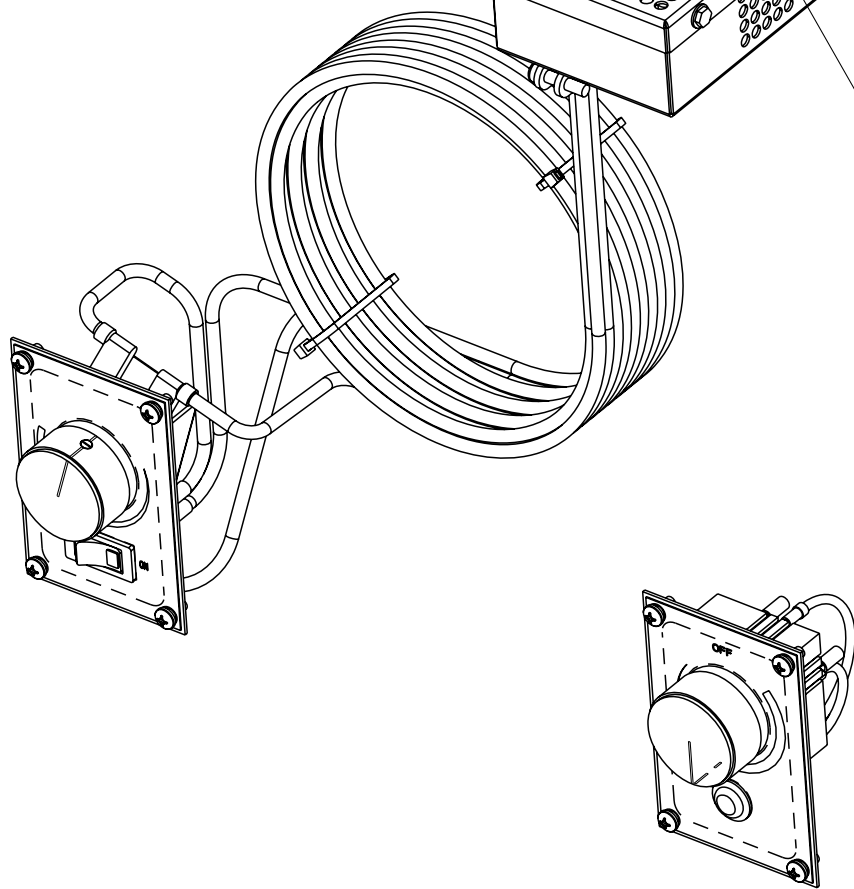
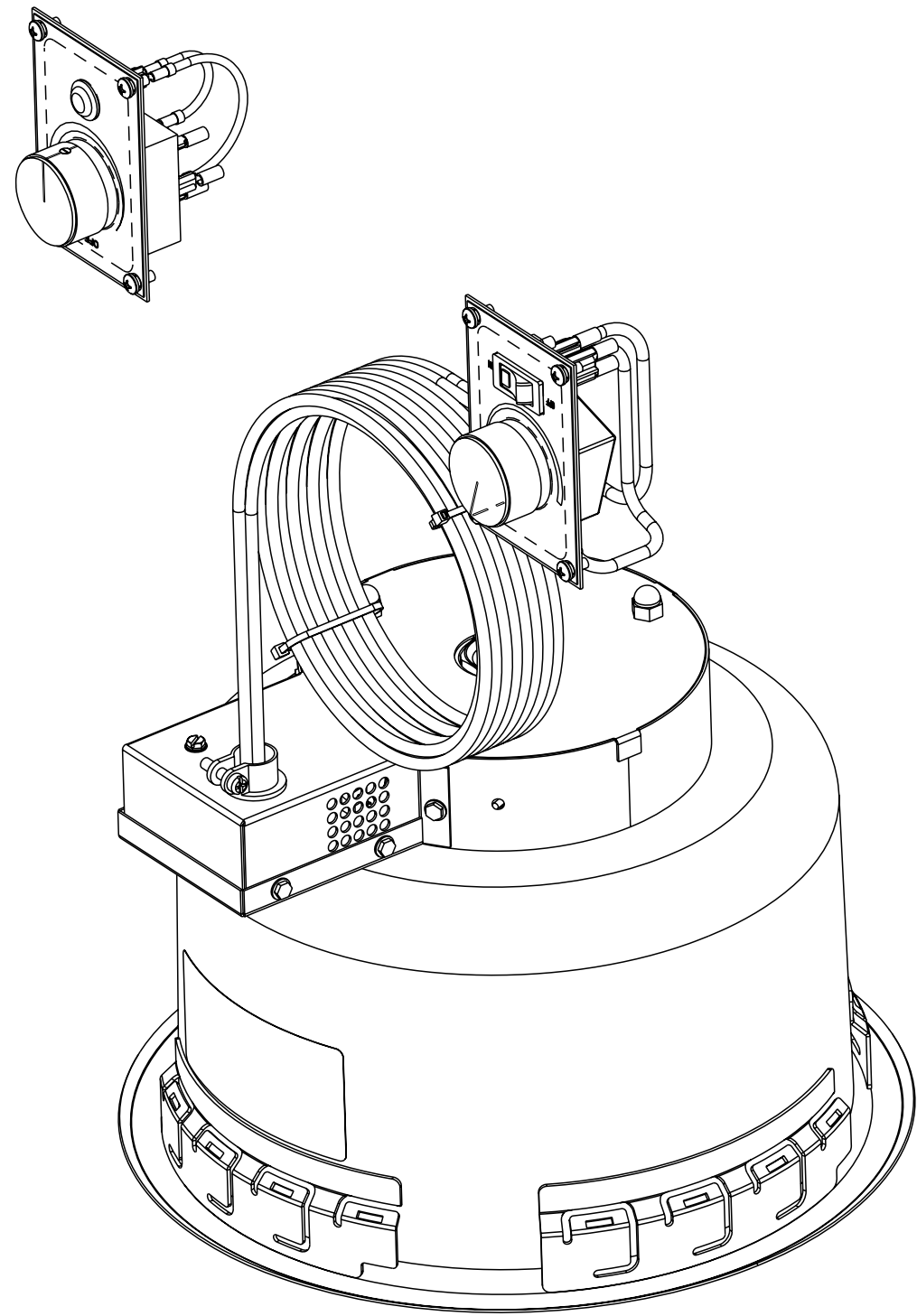
STEP 2			
ITEM	DESCRIPTION	PART NUMBER	QTY
1	STRAINER,HWB	04.42.018.00	1
2	NUT,S.S.,1/4-20 CAP NUT	05.04.210.00	3
3	LABEL CAUTION HOT BLK/SLVR 5.5R	07.03.503.00	2
4	HW-11QT PAN ASSEMBLY	GENERIC	1
5	SPEC LABEL	SS.07.012.00	1

NOTE LOCATION OF
CAUTION-HOT LABELS.

4 NOTE: NON-DRAIN UNIT, USE 04.42.008.00
DRAIN UNITS, USE 04.42.218.00



NOTE LOCATION OF SPEC
LABEL



RELEASE AND REVISION HISTORY				CK:	
RV	DESCRIPTION	DATE	ENG	RB	
1	RELEASED ECO.#15642	9-28-05	GHW	JRM	
11	05.04.549.00 WAS 05.04.133.00, NOTE REVISED,ECO.#17449	-	-	-	
12	UPDATED ELEMENT SCREW DIR.,ECO.#18178	5-3-07	JFQ	DLE	
13	UPDATED ELEMENT SCREW DIR.,ECO.#18527	1-30-08	BEW	JRM	
14	UPDATED PAN ASSM.NOTES,ECO.#18653	5-15-08	BEW	JRM	
15	ADDED WELLS STYLE CONTROL ASSB. & EDIT NOTES,ECO.#19556	7-7-08	GHW	JRM	
		4-21-09	GHW	JRM	
				UNLESS OTHERWISE SPECIFIED DIMS ARE IN INCHES TOL ON ANGLE $\pm 2.0^\circ$ 2 PL ± 0.02 3 PL ± 0.016 HOLE SIZES: $+.005/-0.002$	
				THIS PRINT IS NOT TO BE REPRODUCED WITHOUT PERMISSION OF HATCO CORP.	
				Released	
				HATCO CORP., MILWAUKEE, WI	
				DESCRIPTION HWB-11QT, ASSEMBLY	
				PART NUMBER N/A	
				DRAWING NUMBER 10-03-261	
				REV 15	
				SCALE:0.375	
				PROJ: 945001	
				SHEET 5 OF 5	